



A checklist of flowering plants of Raimona National Park, Assam, in North-eastern India

Sanswrang Basumatary¹, Nazrul Islam², Sanatan Deka², Rathin Barman², Uditya Kumar Borkataki³, Tanisha Chhetri³, Moklesur Rahman¹ and Sanjib Baruah^{1,4}

¹Department of Botany, Bodoland University, Kokrajhar - 783370, Bodoland Territorial Region, Assam, India

²Wildlife Trust of India, F-13, Sector-8, Noida-201301, Uttar Pradesh, India

³Department of Zoology, Gauhati University - 781014, Assam, India

⁴Corresponding author, e-mail: sanjibbaruah9@gmail.com

[Received 26.03.2022; Revised 12.04.2022; Accepted 20.04.2022; Published 30.04.2022]

Abstract

This study presents a checklist of the flowering plants of the Raimona National Park which was popularly known as Ripu Reserve Forest. A survey was conducted during October of 2019 to August of 2021. The plant specimens were collected in flowering or in fruiting stage. A total of 479 taxa belonging to 347 genera and 113 families of flowering plants were recorded from the study area. Out of 479 taxa, it includes 33.61 % herbs, 25.88 % trees, 20.87 % shrubs, 11.06 % climbers, 3.75 % epiphytes, 2.71 % scandent shrubs, 1.46 % parasites, and 0.63 % of lianas. A total of 24 species are recognized as invasive. The five dominant families are Poaceae (27 spp.), Phyllanthaceae (19 spp.), Orchidaceae (18 spp.), Malvaceae (18 spp.), and Rubiaceae (16 spp.). A few lesser known species encountered inside the National Park are *Begonia nepalensis*, *Osbeckia stellata*, *O. nutans*, *Strobilanthes anisophylla*, *S. sabineana*, *S. hamiltoniana* etc. A total of 33 species are of RET categories where 15 species are Endangered (EN), five species are Vulnerable (VU), one species is Rare, and 12 species are in Least Concern (LC) category.

Key words: Angiosperm, Checklist, Conservation, Diversity, North-east India

INTRODUCTION

Assam is the second largest north-eastern state of India, situated between 22°19' to 28°16' N and 89°42' to 96°30' E, occupying 78,438 sq km of geographical area that is the share of 2.39 % of the country. The forest cover of the state is about 28,326.51 sq km or 36.11 % area of the state (FSI 2019). Topographically, the state has three physiographical zones *viz.* Mighty Brahmaputra valley (covers almost 70 % area of the state), Central Assam hills (Hills of Karbi Anglong and North Cachar) and Barak valley (Gogoi 2017; FSI 2019). Assam possess seven National Parks (NP) [*viz.* Dibru Saikhowa NP (340 sq km), Kaziranga NP (430 sq km), Manas NP (500 sq km), Nameri NP (200 sq km), Orang NP (78.81 sq km), Raimona NP (422 sq km), Dehing Patkai NP (234.26 sq km)], 20 Wildlife Sanctuaries, two Biosphere Reserves *viz.* Dibru Saikhowa Biosphere Reserve and Manas Biosphere Reserve. Assam is considered as one of the richest biodiversity zones has a handsome number of floral diversities with 3854 taxa (2752 Dicotyledons, 1080 monocotyledons and 22 gymnosperms) contributing 22.68 % of the Indian flora (Barooah & Ahmed 2014).

The Raimona National Park (RNP) occupies a total area of 422 sq km, declared in 2021, *vide* Govt. Notification No. FRW.02/2021/27 dated 9th of June, 2021. It is situated at the westernmost part of Assam in Kokrajhar district. RNP lies between 26°37' to 26°50' N and 89°51' to 90°14' E, under the jurisdiction of Bodoland Terretorial Region (BTR) of Assam (Figure 1). The Kokrajhar district was once a part of undivided Goalpara district and it was upgraded to a district on 1st of July, 1983 (NIC 2021). Total area of the district is 3296 sq km of which 1166.57 sq km is forest covered. There is 438 sq km of Very Dense Forest, 270.19 sq km of Moderately Dense Forest and 458.38 sq km of Open Forest, covering 35.39 % of

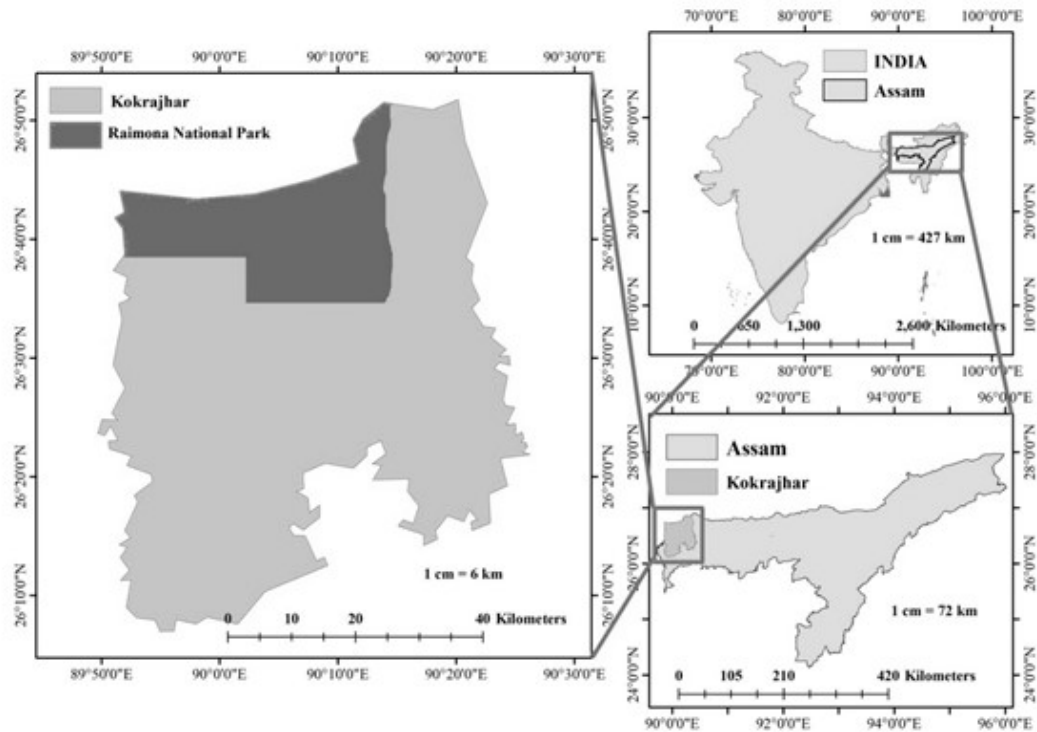


Figure 1. Location map of the Raimona National Park in Kokrajhar district of Assam

geographical area of the district (FSI 2019). Previously, the area of RNP was popularly known as Ripu Reserve Forest under Kachugaon Forest Division (Govt. Notification No. 7606 dt. 22nd Sept/ 1893) covering an area of 605.27 sq km. The Ripu Reserve Forest was one of the oldest and best scientifically managed forests in the country during the late 19th century and had the highest density of *Sal*-Forest in Asia (Daimary 2011). The word '*Raimona*' comes from '*Raymana*' which was a miserable district or the capital name of the tributary state *Ripudwar* on the foothills of Bhutan (Hamilton & Bhuyan 1940). However, the RNP area was covered by savannah forest during the end of 19th century (Perree 1908). Study on plant diversity for this biodiversity rich area had not been done before. Hence, this is the first attempt to encounter and identify the flowering plants wealth of Raimona National Park.

METHODOLOGY

Field surveys on the Raimona National Park which were conducted during October 2019 to August 2021. Collected specimens were processed into mounted herbarium-sheets following Jain and Rao (1977) and Das (2021). Identification of the flora have been done with the help of several regional and local floras (Kanjilal *et al.* 1934 – '40; Balakrisnan 1981, 1982; Deb 1981, 1983; Barua *et al.* 1988; Barua 1992, 2000; Nath 1999; Barthakur *et al.* 2001; Bora & Kumar 2003; Nath 2006; Begum 2008; Daimary 2011; Deka 2015; Haque 2016; Boro 2016; Gogoi 2017; Borthakur *et al.* 2018) and matched at ASSAM-Herbarium and with available online herbarium specimens deposited in K, L, AMES, NY, etc. For up-to-date nomenclature of the taxa recent floras, literature and websites such as IPNI, Tropicos and www.plantsoftheworldonline.org were consulted. In Table 1, different taxa are alphabetically arranged to their family, genus and species. Some of the rare species encountered during surveys are displayed in Plates II and the inside beauty of the forest has been presented in Plate I.

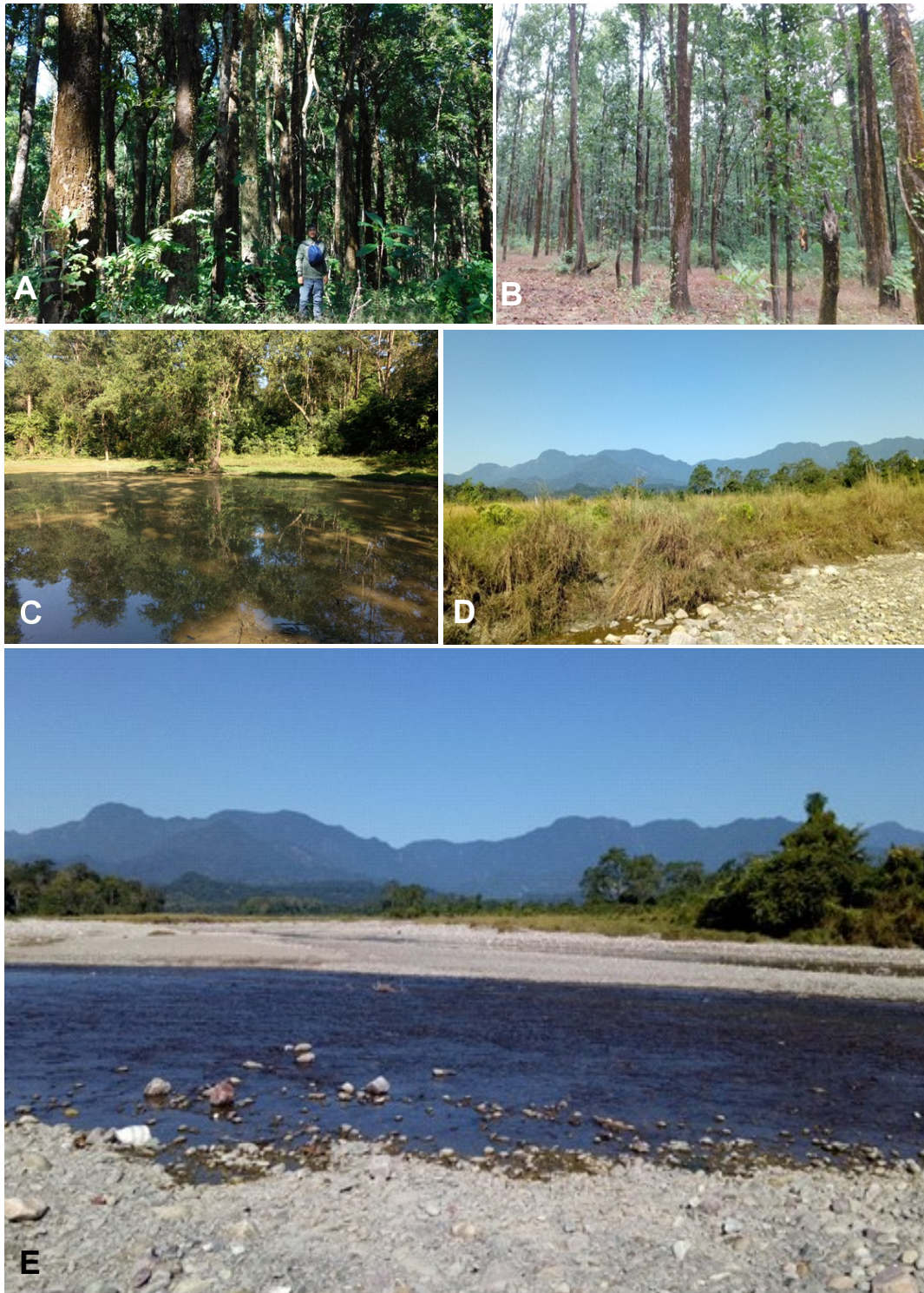


PLATE I. Habitat structures inside the Raimona National Park: **A.** High Alluvial Semi-Evergreen Forest; **B.** Sal (*Shorea robusta*) forest; **C.** Pond inside semi-evergreen forest; **D.** Grassland in Daojeng Gonthong area; **E.** Hel River in Daojeng Gonthong area

RESULTS

A total of 479 taxa (*viz.* species and varieties) belonging to 347 genera and 113 families of flowering plants (spermatophytes) were recorded from the study area (Table 1). The details of families, genera, species, varieties names, vernacular names, habit-forms and conservation status of the taxa have been given in below.

Table 1. List of plant taxa recorded from Raimona National Park in Assam

Sl. Nos.	Botanical Names	Vernacular Names [Assamese (Ass)/Bodo (Bd)]	Habit	Conservation status
ACANTHACEAE Juss.				
1	<i>Barleria strigosa</i> Willd. [SWB0150]		Shrub	Not Evaluated (NE)
2	<i>Eranthemum griffithii</i> (T.Anderson) Bremek. &Nann.- Bremek. [SWB0282]		Shrub	Not Evaluated (NE)
3	<i>Hygrophila phlomooides</i> Nees [NI0342]		Herb	Not Evaluated (NE)
4	<i>Justicia adhatoda</i> L. [MR0536]	Bahaka (Ass), Barsikha-Guphur (Bd)	Shrub	Not Evaluated (NE)
5	<i>Justicia gendarussa</i> Burm.f. [SWB0354]	Jatrasi (Bd)	Shrub	Not Evaluated (NE)
6	<i>Lepidagathis incurva</i> Buch.- Ham. ex D.Don [MR0366]		Herb	Not Evaluated (NE)
7	<i>Phlogacanthus thyrsoformis</i> (Roxb. ex Hardw.) Mabb. [MR0448]	Titaphul (Ass), Barsika (Bd)	Shrub	Not Evaluated (NE)
8	<i>Rungia pectinata</i> (L.) Nees [SWB0491]		Herb	Not Evaluated (NE)
9	<i>Strobilanthes anisophylla</i> (Wall. ex Hook.) T.Anderson [NI0534]		Shrub	Not Evaluated (NE)
10	<i>Strobilanthes hamiltoniana</i> (Steud.) Bosser& Heine [NI0106]		Shrub	Not Evaluated (NE)
11	<i>Strobilanthes sabineana</i> (Wall. ex Lindl.) Nees [MR0353]		Shrub	Not Evaluated (NE)
12	<i>Thunbergia grandiflora</i> Roxb. [SWB0556]	Kauri-Lota (Ass)	Climber	Not Evaluated (NE)
ACHARIACEAE Harms				
13	<i>Gynocardia odorata</i> R.Br. [SWB0329]	DumaluBiphang (Bd)	Tree	VU (Ved <i>et al.</i> 2003)
ACTINIDIACEAE Engl. &Gilg				
14	<i>Saurauia roxburghii</i> Wall. [TC0501]	Bon-posola (Ass)	Tree	Not Evaluated (NE)
ALANGIACEAE DC.				
15	<i>Alangium chinense</i> (Lour.) Harms [SWB0118]	Chagaligach (Ass), Bon Daoli (Bd)	Tree	Not Evaluated (NE)
ALISMATACEAE Vent.				
16	<i>Sagittaria guayanensis</i> Kunth [MR0496]	Paani-Kochu (Ass)	Herb	Not Evaluated (NE)
17	<i>Sagittaria trifolia</i> L. [MR0497]		Herb	Not Evaluated (NE)

Sl. Nos.	Botanical Names	Vernacular Names [Assamese (Ass)/Bodo (Bd)]	Habit	Conservation status
AMARANTHACEAE Juss.				
18	<i>Achyranthes aspera</i> L. [SWB0535]	Ubhat-Kata (Ass), Ulta-sur (Bd)	Herb	Not Evaluated (NE)
19	<i>Achyranthes bidentata</i> Blume [TC0107]	Hagraniulta-sur (Bd)	Herb	Not Evaluated (NE)
20	<i>Alternanthera sessilis</i> (L.) R.Br. ex DC. [NI0128]	Mati-Kaduri (Ass)	Herb	Not Evaluated (NE)
21	<i>Amaranthus spinosus</i> L. [SWB0130]	Kata-Xutura (Ass), Khudunasu-gwnang (Bd)	Herb	Not Evaluated (NE)
22	<i>Amaranthus viridis</i> L. [UKB0131]	Xutura-Xak (Ass), Khudunasu-gwiywi (Bd)	Herb	Not Evaluated (NE)
23	<i>Cyathula prostrata</i> (L.) Bume [SWB0230]	Bankhoth (Ass), Hagranisamthai (Bd)	Herb	Not Evaluated (NE)
24	<i>Deeringia amaranthoides</i> (Lam.) Merr. [TC0242]	Man-mani (Ass)	Shrub	Not Evaluated (NE)
AMARYLLIDACEAE J.St.-Hil.				
25	<i>Crinum amoenum</i> Ker Gawl. ex Roxb. [MR0218]		Herb	Not Evaluated (NE)
ANACARDIACEAE R.Br.				
26	<i>Lanea coromandelica</i> (Houtt.) Merr. [NI0358]	Jia/Jiwal (Ass)	Tree	Not Evaluated (NE)
27	<i>Mangifera indica</i> L. [NI0391]	Aam (Ass), Thajwo (Bd)	Tree	Not Evaluated (NE)
28	<i>Mangifera sylvatica</i> Roxb. [SB0127]	HagraniTajwo (Bd)	Tree	LC (IUCN 2022)
29	<i>Pegia nitida</i> Colebr. [MR0441]	Bhela/Bhaula (Ass)	Scandent shrub	Not Evaluated (NE)
30	<i>Semecarpus anacardium</i> L.f. [NI0508]		Tree	Not Evaluated (NE)
31	<i>Spondias pinnata</i> (L.f.) Kurz [SWB0527]	Aamra/Amratenga (Ass), Thaisuri(Bd)	Tree	Not Evaluated (NE)
ANNONACEAE Juss.				
32	<i>Miliusa dioeca</i> (Roxb.) Chaowasku & Kessler [SWB0407]		Tree	Not Evaluated (NE)
33	<i>Monoon simiarum</i> (Buch.-Ham. ex Hook.f. & Thomson) B.Xue & R.M.K.Saunders [SWB0411]		Tree	Not Evaluated (NE)
APIACEAE Lindl.				
34	<i>Centella asiatica</i> (L.) Urb. [SWB0190]	Bor-mani-muni (Ass), Mani-muni Gidir (Bd)	Herb	Not Evaluated (NE)
35	<i>Oenanthe javanica</i> (Blume) DC. [NI0424]	Dao Penda (Bd)	Herb	Not Evaluated (NE)
APOCYNACEAE Juss.				
36	<i>Alstonia scholaris</i> (L.) R. Br. [TC0392]	Sotiana (Ass), Stauna (Bd)	Tree	Not Evaluated (NE)

Sl. No.	Botanical Name	Vernacular Name	Habit	Conservation status
37	<i>Calotropis gigantea</i> (L.) W.T.Aiton [NI0176]	Akand (Ass), Gogondo (Bd)	Shrub	Not Evaluated (NE)
38	<i>Chonemorpha fragrans</i> (Moon) Alston [SWB0194]		Climber	Not Evaluated (NE)
39	<i>Cryptolepis buchananii</i> R.Br. ex Roem. & Schult. [SWB0222]	Parwokiya (Bd)	Climber	Not Evaluated (NE)
40	<i>Cryptolepis sinensis</i> (Lour.) Merr. [SWB0223]	Parwokiya (Bd)	Climber	Not Evaluated (NE)
41	<i>Holarrhena pubescens</i> (Buch.-Ham.) Wall. G.Don [SB0337]	Dudkhori (Ass), Dwokri (Bd)	Tree	Not Evaluated (NE)
42	<i>Hoya verticillata</i> (Vahl) G.Don var. <i>verticillata</i> [SWB0339]		Climber	Not Evaluated (NE)
43	<i>Ichnocarpus frutescens</i> (L.) W.T.Aiton [SWB0345]		Climber	Not Evaluated (NE)
44	<i>Rauvolfia serpentina</i> (L.) Benth ex Kurz [NI0479]	Sarpagandha (Ass)	Shrub	EN (Chowdhary and Murti 2000)
45	<i>Tabernaemontana divaricata</i> (L.) R.Br. ex Roem. & Schult. [UKB0542]	Kathanda (Ass), Daodwi-Pul (Bd)	Shrub	Not Evaluated (NE)
46	<i>Vallis solanacea</i> (Roth) Kuntze [SB0570]		Climber	Not Evaluated (NE)
47	<i>Vincetoxicum hirsutum</i> (Wall.) Kuntze [UKB0566]		Climber	Not Evaluated (NE)
48	<i>Wrightia arborea</i> (Dennst.) Mabb. [NI0574]	SaruDudkhori (Ass), Dwokrigidir (Bd)	Tree	Not Evaluated (NE)
ARACEAE Juss.				
49	<i>Alocasia fornicata</i> (Kunth) Schott [MR0567]		Herb	Not Evaluated (NE)
50	<i>Alocasia macrorrhizos</i> (L.) G.Don [SWB0125]		Herb	Not Evaluated (NE)
51	<i>Colocasia esculenta</i> (L.) Schott [SWB0209]	Kola-Kochu (Ass), Tasogwswm (Bd)	Herb	Not Evaluated (NE)
52	<i>Lasia spinosa</i> (L.) Thwaites [MR0361]	Sibru (Bd)	Herb	Not Evaluated (NE)
53	<i>Pothos scandens</i> L. [MR0472]		Climber	Not Evaluated (NE)
54	<i>Rhaphidophora decursiva</i> (Roxb.) Schott [TC0482]		Climber	Not Evaluated (NE)
55	<i>Typhonium trilobatum</i> (L.) Schott [SWB0124]		Herb	Not Evaluated (NE)
ARALIACEAE Juss.				
56	<i>Hydrocotyle sibthorpioides</i> Lam. [MR0340]	Sorumani-muni (Ass), Mani-muni Pisa (Bd)	Herb	Not Evaluated (NE)
57	<i>Heptapleurum venulosum</i> (Wight & Arn.) Seem. [TC0335]	Dhobailata (Ass)	Scandent shrub	Not Evaluated (NE)
58	<i>Trevesia palmata</i> (Roxb. ex Lindl.) Vis. [SB0562]	Bhotola (Ass)	Shrub	Not Evaluated (NE)
ARECACEAE Juss.				
59	<i>Calamus leptospadix</i> Griff. [NI0173]	Garla (Bd)	Scandent shrub	Not Evaluated (NE)
60	<i>Calamus tenuis</i> Roxb. [NI0174]	Raidwng (Bd)	Scandent shrub	Not Evaluated (NE)
61	<i>Wallichia oblongifolia</i> Griff. [UKB0572]		Shrub	Not Evaluated (NE)
ARISTOLOCHIACEAE Juss.				
62	<i>Aristolochia acuminata</i> Lam. [MR0142]	Bis-lokhon (Bd)	Climber	Not Evaluated (NE)
63	<i>Aristolochia cathcartii</i> Hook.f. [SWB0143]	Arka-Mul (Ass)	Climber	Not Evaluated (NE)

Sl. No.	Botanical Name	Vernacular Name	Habit	Conservation status
ASPARAGACEAE Juss.				
64	<i>Asparagus racemosus</i> Willd. [TC0147]	Satmul (Ass., Bd)	Herb	Not Evaluated (NE)
65	<i>Dracaena angustifolia</i> (Medik.) Roxb. [SWB0263]		Shrub	Not Evaluated (NE)
66	<i>Peliosanthes macrophylla</i> Wall. ex Baker [MR0442]		Herb	Not Evaluated (NE)
ASTERACEAE Bercht. &J.Presl				
67	<i>Acmella paniculata</i> (Wall. ex DC.) R.K.Jansen [MR0108]	Usumwi (Bd)	Herb	Not Evaluated (NE)
68	<i>Ageratum conyzoides</i> L. [SB0116]	Gendheli Bann (Ass), Bwrma Dari (Bd)	Herb	Not Evaluated (NE)
69	<i>Bidens pilosa</i> L. [TC0155]		Herb	Not Evaluated (NE)
70	<i>Blumea lacera</i> (Burm.f.) DC. [SWB0158]		Herb	Not Evaluated (NE)
71	<i>Chromolaena odorata</i> (L.) R.M.King&H.Rob. [MR0195]	Germany Bann (Ass), German hagra/Jahab (Bd)	Shrub	Not Evaluated (NE)
72	<i>Crassocephalum crepidioides</i> (Benth.) S.Moore [TC0216]		Herb	Not Evaluated (NE)
73	<i>Cyanthillium cinereum</i> (L.) H.Rob. [TC0571]		Herb	Not Evaluated (NE)
74	<i>Eclipta prostrata</i> (L.) L. [SWB0268]	Kesaraja (Ass), DaogangJwla (Bd)	Herb	Not Evaluated (NE)
75	<i>Elephantopus scaber</i> L. [TC0275]		Herb	Not Evaluated (NE)
76	<i>Emilia sonchifolia</i> (L.) DC. [TC0277]		Herb	Not Evaluated (NE)
77	<i>Enydra fluctuans</i> Lour. [MR0279]	Helanchisak (Ass), Elangsi (Bd)	Herb	Not Evaluated (NE)
78	<i>Gamochaeta pensylvanica</i> (Willd.) Cabrera [UKB0309]		Climber	Not Evaluated (NE)
79	<i>Mikania micrantha</i> Kunth [NI0406]		Herb	Not Evaluated (NE)
80	<i>Parthenium hysterophorus</i> L. [UKB0437]		Herb	Not Evaluated (NE)
81	<i>Xanthium strumarium</i> L. [SWB0575]	Ogora (Ass), Okhra (Bd)	Herb	Not Evaluated (NE)
BALSAMINACEAE Rich.				
82	<i>Impatiens trilobata</i> Colebr. [TC0346]		Herb	Not Evaluated (NE)
83	<i>Impatiens tripetala</i> Roxb. ex DC. [MR0214]		Herb	Not Evaluated (NE)
BEGONIACEAE C.Agardh				
84	<i>Begonia nepalensis</i> (A.DC.) Warb. [SWB0153]		Herb	Not Evaluated (NE)
85	<i>Begonia roxburghii</i> (Miq.) A.DC. [UKB0428]	MwikiPagla (Bd)	Herb	Not Evaluated (NE)
BIGNONIACEAE Juss.				
86	<i>Oroxylum indicum</i> (L.) Kurz [SB0185]	Ding Dinga (Ass), Karong-khandai (Bd)	Tree	VU (Rawat 2008)
87	<i>Stereospermum chelonoides</i> (L.f.) DC. [MR0532]	Paroli (Ass), Serphang (Bd)	Tree	Not Evaluated (NE)
BORAGINACEAE Juss.				
88	<i>Cordia dichotoma</i> G.Forst. [SWB0347]	Dumuni-boal (Ass), Doba Kari (Bd)	Tree	Not Evaluated (NE)

Sl. No.	Botanical Name	Vernacular Name	Habit	Conservation status
89	<i>Ehretia acuminata</i> R. Br. [MR0269]	Jari-gach (Ass)	Tree	Not Evaluated (NE)
90	<i>Heliotropium indicum</i> L. [NI0332]	Haati-Xuria (Ass)	Herb	Not Evaluated (NE)
BRASSICACEAE Burnett.				
91	<i>Rorippa indica</i> (L.) Hiern [TC0486]	Besor Daba (Bd)	Herb	Not Evaluated (NE)
CALOPHYLLACEAE J.Agardh				
92	<i>Mesua ferrea</i> L. [SWB0512]	Nahor (Bd)	Tree	Not Evaluated (NE)
CAMPANULACEAE Juss.				
93	<i>Lobelia zeylanica</i> L. [TC0378]		Herb	Not Evaluated (NE)
CANNABACEAE Martinov				
94	<i>Cannabis sativa</i> L. [NI0152]	Ganja (Bd)	Herb	Not Evaluated (NE)
95	<i>Trema orientale</i> (L.) Blume [SWB0561]	Japong (Ass), Phadang (Bd)	Tree	Not Evaluated (NE)
CANNACEAE Juss.				
96	<i>Canna indica</i> L. [UKB0177]		Herb	Not Evaluated (NE)
CAPPARACEAE Juss.				
97	<i>Capparis olacifolia</i> Hook.f. & Thomson [MR0509]		Shrub	Not Evaluated (NE)
98	<i>Cratogeomys magna</i> (Lour.) DC. [TC0217]		Tree	Not Evaluated (NE)
CARYOPHYLLACEAE Juss.				
99	<i>Drymaria cordata</i> (L.) Willd. ex Schult. [TC0264]	Jabsri (Bd)	Herb	Not Evaluated (NE)
CHLORANTHACEAE R.Br. ex Sims				
100	<i>Chloranthus elatior</i> Link [NI0193]		Shrub	Not Evaluated (NE)
CLEOMACEAE Airy Shaw				
101	<i>Cleome gynandra</i> L. [SWB0549]		Herb	Not Evaluated (NE)
102	<i>Cleome rutidosperma</i> DC. [SWB0203]		Herb	Not Evaluated (NE)
103	<i>Cleome viscosa</i> L. [SWB0179]		Herb	Not Evaluated (NE)
CLUSIACEAE Lindl.				
104	<i>Garcinia lanceifolia</i> Roxb. [TC0310]		Tree	Not Evaluated (NE)
105	<i>Garcinia pedunculata</i> Roxb. ex Buch.-Ham. [SB0548]	Taika (Bd)	Tree	EN (Veddet <i>al.</i> 2003)
106	<i>Garcinia xanthochymus</i> Hook.f. ex T. Anderson [UKB0510]	Tempwr (Bd)	Tree	Not Evaluated (NE)
COMBRETACEAE R.Br.				
107	<i>Combretum acuminatum</i> Roxb. [TC0210]		Scandent shrub	Not Evaluated (NE)
108	<i>Terminalia arjuna</i> (Roxb. ex DC.) Wight & Arn. [MR0311]	Arjun (Ass, Bd)	Tree	VU (Rawat 2008)
109	<i>Terminalia bellirica</i> (Gaertn.) Roxb. [SWB0202]	Bhomora (Ass), Bhaora (Bd)	Tree	Not Evaluated (NE)
110	<i>Terminalia chebula</i> Retz. [TC0550]	Silikha, Selekha (Bd)	Tree	VU (Rawat 2008)
111	<i>Terminalia myriocarpa</i> Van Heurck&Müll.Arg. [NI0413]	Sal Khorai (Bd)	Tree	Not Evaluated (NE)

Sl. No.	Botanical Name	Vernacular Name	Habit	Conservation status
COMMELINACEAE Mirb.				
112	<i>Amischotolype mollissima</i> (Blume) Hassk. [NI0132]		Herb	Not Evaluated (NE)
113	<i>Commelina benghalensis</i> L. [NI0398]		Herb	Not Evaluated (NE)
114	<i>Commelina diffusa</i> Burm.f. [MR0211]		Herb	Not Evaluated (NE)
115	<i>Commelina maculata</i> Edgew. [SWB0351]		Herb	Not Evaluated (NE)
116	<i>Cyanotis cristata</i> (L.) D.Don [SB0229]		Herb	Not Evaluated (NE)
117	<i>Floscopa scandens</i> Lour. [NI0307]		Herb	Not Evaluated (NE)
118	<i>Murdannia nudiflora</i> (L.) Brenan [TC0551]		Herb	Not Evaluated (NE)
CONVOLVULACEAE Juss.				
119	<i>Argyreia argentea</i> (Roxb.) Sweet [SWB0141]	Bihh-dharok (Ass)	Climber	Not Evaluated (NE)
120	<i>Camonea umbellate</i> (L.) A.R.Simões & Staples [MR0213]		Climber	Not Evaluated (NE)
121	<i>Camonea vitifolia</i> (Burm.f.) A.R.Simões & Staples [MR0399]		Climber	Not Evaluated (NE)
122	<i>Cuscuta reflexa</i> Roxb. [SWB0228]	Akaxi-lota (Ass), Gwmwendwng (Bd)	Parasite	Not Evaluated (NE)
123	<i>Evolvulus nummularius</i> (L.) L. [UKB0289]	Alakha-bann (Ass)	Climber	Not Evaluated (NE)
124	<i>Ipomoea aquatic</i> Forssk. [MR0349]	Kolmou (Ass), Mande (Bd)	Climber	Not Evaluated (NE)
125	<i>Ipomoea carnea</i> Jacq. [SWB0350]	Pani Bhatora (Ass), Mande Raja (Bd)	Shrub	Not Evaluated (NE)
126	<i>Ipomoea hederifolia</i> L. [MR0212]		Climber	Not Evaluated (NE)
127	<i>Merremia hederacea</i> (Burm.f.) Hallier f. [NI0397]		Climber	Not Evaluated (NE)
128	<i>Poranopsis paniculata</i> (Roxb.) Roberty [SWB0469]		Climber	Not Evaluated (NE)
COSTACEAE Nakai				
129	<i>Hellenia speciosa</i> (J.Koenig) S.R.Dutta [TC0215]	Jam-Lakhuti (Ass), Buri-tokon (Bd)	Herb	Not Evaluated (NE)
CUCURBITACEAE Juss.				
130	<i>Cucumis maderaspatanus</i> L. [SWB0224]		Climber	Not Evaluated (NE)
131	<i>Diplocyclos palmatus</i> (L.) C.Jeffrey [TC0262]	Daokha-khamplai (Bd)	Climber	Not Evaluated (NE)
132	<i>Hodgsonia macrocarpa</i> (Blume) Cogn. [NI0336]	Thebou-lota (Ass), Hagrani Jwgwnar (Bd)	Climber	Not Evaluated (NE)
133	<i>Solena heterophylla</i> Lour. [TC0523]		Climber	Not Evaluated (NE)
134	<i>Trichosanthes costata</i> Blume [UKB0328]	Kaila (Bd)	Climber	Not Evaluated (NE)
135	<i>Trichosanthes wallichiana</i> (Ser.) Wight [TC0563]	Daokha-kamplai (Bd)	Climber	Not Evaluated (NE)
CYPERACEAE Juss.				
136	<i>Bulbostylis barbata</i> (Rottb.) C.B. Clarke [MR0170]		Herb	Not Evaluated (NE)
137	<i>Carex cruciata</i> Wahlenb. [TC0182]		Herb	Not Evaluated (NE)

Sl. No.	Botanical Name	Vernacular Name	Habit	Conservation status
138	<i>Cyperus brevifolius</i> (Rottb.) Hassk. [SWB0235]	Keya-Bann (Ass)	Herb	Not Evaluated (NE)
139	<i>Cyperus cephalotes</i> Vahl [NI0301]	Keya-Bann (Ass)	Herb	Not Evaluated (NE)
140	<i>Cyperus compressus</i> L. [SB0237]		Herb	Not Evaluated (NE)
141	<i>Cyperus cyperoides</i> (L.) Kuntze [NI0285]		Herb	Not Evaluated (NE)
142	<i>Cyperus haspan</i> L. [TC0239]		Herb	Not Evaluated (NE)
143	<i>Eleocharis retroflexa</i> (Poir.) Urb. [SWB0274]		Herb	Not Evaluated (NE)
144	<i>Fimbristylis dichotoma</i> (L.) Vahl [UKB0270]		Herb	Not Evaluated (NE)
145	<i>Fimbristylis littoralis</i> Gaudich. [TC0300]		Herb	Not Evaluated (NE)
146	<i>Fimbristylis quinquangularis</i> (Vahl) Kunth subsp. <i>quinquangularis</i> [SWB0236]	Keya-Bann (Ass)	Herb	Not Evaluated (NE)
DILLENIACEAE Salisb.				
147	<i>Dillenia indica</i> L. [NI0255]	Outenga (Ass), Taigir (Bd)	Tree	Not Evaluated (NE)
148	<i>Dillenia pentagyna</i> Roxb. [TC0138]	Oxy (Ass, Bd)	Tree	Not Evaluated (NE)
149	<i>Tetracera sarmentosa</i> (L.) Vahl. [SWB0136]	Paanilewa (Ass), Taigirbendwng (Bd)	Liana	Not Evaluated (NE)
DIOSCOREACEAE R.Br.				
150	<i>Dioscorea bulbifera</i> L. [SBW0238]	Bann-Alu (Ass), Taa-ru (Bd)	Climber	EN (Baishya & Bora 2002)
151	<i>Dioscorea alata</i> L. [TC0257]	Kaath-Alu (Ass), Ta-ganda (Bd)	Climber	Not Evaluated (NE)
152	<i>Dioscorea glabra</i> Roxb. [SWB0259]		Climber	Not Evaluated (NE)
153	<i>Dioscorea hispida</i> Dennst. [TC0149]		Climber	Not Evaluated (NE)
154	<i>Dioscorea pentaphylla</i> L. [TC0299]		Climber	Not Evaluated (NE)
155	<i>Tacca integrifolia</i> Ker Gawl. [TC0543]		Herb	EN (Baishya 1999)
DIPTEROCARPACEAE Blume				
156	<i>Shorea robusta</i> C.F.Gaertn. [SWB0514]	Sal (Ass)	Tree	LC (IUCN 2022)
ELAEOCARPACEAE Juss.				
157	<i>Elaeocarpus floribundus</i> Blume [TC0261]	Jolphai (Ass), Jolpi (Bd)	Tree	Not Evaluated (NE)
158	<i>Elaeocarpus lucidus</i> Roxb. [TC0271]		Tree	Not Evaluated (NE)
159	<i>Elaeocarpus varunua</i> Buch.-Ham. ex Mast. [SWB0166]		Tree	Not Evaluated (NE)
160	<i>Sloanea sterculiacea</i> var. <i>assamica</i> (Benth.) Coode [TC0518]	Phul-singori (Ass), Sarang (Bd)	Tree	Not Evaluated (NE)
EUPHORBIACEAE Juss.				
161	<i>Croton caudatus</i> Geiseler [MR0220]	Lota-mahudi (Ass), Jwo-boka (Bd)	Scandent shrub	Not Evaluated (NE)
162	<i>Balakata baccata</i> (Roxb.) Esser [SWB0499]	Seleng (Ass)	Tree	Not Evaluated (NE)
163	<i>Croton joufra</i> Roxb. [TC0390]		Tree	Not Evaluated (NE)

Sl. No.	Botanical Name	Vernacular Name	Habit	Conservation status
164	<i>Euphorbia hirta</i> L. [TC0285]	Gakhiroti-Bann (Ass), Nasrai-khoro (Bd)	Herb	Not Evaluated (NE)
165	<i>Euphorbia indica</i> Lam. [SWB0454]		Herb	Not Evaluated (NE)
166	<i>Euphorbia thymifolia</i> L. [SWB0552]		Herb	Not Evaluated (NE)
167	<i>Macaranga denticulata</i> (Blume) Müll. Arg. [SB0381]	Lai-dolorPurla (Bd)	Tree	Not Evaluated (NE)
168	<i>Mallotus nudiflorus</i> (L.) Kulju & Welzen [SWB0167]	Bhelkor/Bhelu (Ass), Thailadur (Bd)	Tree	Not Evaluated (NE)
169	<i>Mallotus philippensis</i> (Lam.) Müll. Arg. [SWB0388]	Jarath/Lochan (Ass), Sindhur biphang (Bd)	Tree	Not Evaluated (NE)
170	<i>Mallotus roxburghianus</i> Müll.Arg. [UKB0129]	Gurjibiphang (Bd)	Shrub	Not Evaluated (NE)
171	<i>Mallotus tetracoccus</i> (Roxb.) Kurz [NI0221]	Moralia (Ass), Lai-dolorJaati (Bd)	Tree	Not Evaluated (NE)
172	<i>Ricinus communis</i> L. [SB0485]	Era-goss (Ass), Indi (Bd)	Shrub	Not Evaluated (NE)
FABACEAE Lindl., CAESALPINIOIDEAE				
173	<i>Bauhinia acuminata</i> L. [SB0151]	Matikanchan (Ass)	Tree	Not Evaluated (NE)
174	<i>Bauhinia purpurea</i> L. [SWB0178]	Ronga Kanchan (Ass)	Tree	LC (IUCN 2022)
175	<i>Cassia fistula</i> L. [MR0154]	Sonaru (Ass), Sonalu (Bd)	Tree	Not Evaluated (NE)
176	<i>Delonix regia</i> (Bojer ex Hook.) Raf. [MR0243]	Khrishna sura (Ass, Bd)	Tree	LC (IUCN 2022)
177	<i>Mezoneuroncucullatum</i> (Roxb.) Wight & Arn. [SWB0402]	Baaghachora (Ass)	Scandent shrub	Not Evaluated (NE)
178	<i>Senna alata</i> (L.) Roxb. [TC0204]	Solotabiphang (Bd)	Shrub	Not Evaluated (NE)
179	<i>Senna occidentalis</i> (L.) Link [TC0312]	Hant-thenga (Ass), Adi digagidir (Bd)	Herb	Not Evaluated (NE)
180	<i>Senna siamea</i> (Lam.) H.S.Irwin& Barneby [SWB0511]		Tree	Not Evaluated (NE)
181	<i>Senna tora</i> (L.) Roxb. [SB0400]	Bon-medelua (Ass), Adi diga (Bd)	Herb	Not Evaluated (NE)
182	<i>Tamarindus indica</i> L. [NI0544]	Teteli (Ass), Thinklang (Bd)	Tree	Not Evaluated (NE)
FABACEAE Lindl., MIMOSOIDEAE				
183	<i>Albizia chinensis</i> (Osbeck) Merr. [MR0119]	Saw-koroi (Ass)	Tree	Not Evaluated (NE)
184	<i>Albizia lebbek</i> (L.) Benth. [SWB0294]	Sirish (Ass)	Tree	Not Evaluated (NE)
185	<i>Albizia lucidior</i> (Steud.) I.C.Nielson ex H.Hara [TC0296]	Moj/Silkoroi (Ass)	Tree	Not Evaluated (NE)
186	<i>Albizia procera</i> (Roxb.) Benth. [SWB0122]	Sal Korai (Bd)	Tree	Not Evaluated (NE)
187	<i>Mimosa pudica</i> L. [SB0409]	Nilaji-bon, Daosa-mwkreb (Bd)	Shrub	Not Evaluated (NE)
188	<i>Samanea saman</i> (Jacq.) Merr. [NI0498]	Okha Biphang (Bd)	Tree	Not Evaluated (NE)
189	<i>Senegalia catechu</i> (L.f.) P.J.H.Hurter& Mabb.[TC0103]	Khoir (Ass), Khwiri (Bd)	Tree	Not Evaluated (NE)
190	<i>Senegalia gageana</i> (Craib) Maslin, Seigler & Ebinger [UKB0293]		Shrub	Not Evaluated (NE)

Sl. No.	Botanical Name	Vernacular Name	Habit	Conservation status
FABACEAE Lind., PAPILIONOIDEAE				
191	<i>Alysicarpus glumaceus</i> (Vahl) DC. [TC0389]		Herb	Not Evaluated (NE)
192	<i>Butea monosperma</i> (Lam.) Kuntze [TC0171]	Polas (Ass, Bd)	Tree	Not Evaluated (NE)
193	<i>Crotalaria pallida</i> Aiton [NI0457]	Jhunjhunia (Ass)	Herb	Not Evaluated (NE)
194	<i>Dalbergia sissoo</i> Roxb. ex DC. [TC0304]	Shisham (Ass), Sisu (Bd)	Tree	Not Evaluated (NE)
195	<i>Dalbergia stipulacea</i> Roxb. [SWB0241]	Dat-bijla (Ass)	Shrub	Not Evaluated (NE)
196	<i>Dendrolobium triangulare</i> (Retz.) Schindl. [TC0248]	Makhiloti (Ass)	Shrub	Not Evaluated (NE)
197	<i>Erythrina stricta</i> Roxb. [SWB0284]	Modar (Ass), Mandar (Bd)	Tree	Not Evaluated (NE)
198	<i>Flemingia stricta</i> Roxb. [SB0240]		Shrub	Not Evaluated (NE)
199	<i>Flemingia strobilifera</i> (L.) W.T.Aiton [MR0305]	Makhloti (Ass)	Shrub	Not Evaluated (NE)
200	<i>Grona heterocarpon</i> (L.) H.Ohashi&K.Ohashi [MR0303]		Shrub	Not Evaluated (NE)
201	<i>Millettia extensa</i> (Benth.) Benth. ex Baker [SB0408]	Hololokabendwng (Bd)	Scandent shrub	Not Evaluated (NE)
202	<i>Polhillides velutina</i> (Willd.) H.Ohashi & K.Ohashi [SB0252]		Shrub	Not Evaluated (NE)
203	<i>Pongamia pinnata</i> (L.) Pierre [SWB0467]	Karach (Ass), Korangso (Bd)	Tree	Not Evaluated (NE)
204	<i>Sohmaea laxiflora</i> (DC.) H.Ohashi&K.Ohashi [MR0113]		Shrub	Not Evaluated (NE)
205	<i>Tephrosia candida</i> DC. [UKB0547]	Bilokhoni (Ass)	Shrub	Not Evaluated (NE)
FAGACEAE Dumort.				
206	<i>Castanopsis indica</i> (Roxb. ex Lindl.) A.DC. [SWB0456]		Tree	Not Evaluated (NE)
207	<i>Castanopsis lanceifolia</i> (Oerst.) Hickel & A.Camus [UKB0187]	Singori (Ass)	Tree	Not Evaluated (NE)
GESNERIACEAE Rich. & Juss.				
208	<i>Aeschynanthus acuminatus</i> Wall. ex A.DC. [MR0251]		Epiphyte	Not Evaluated (NE)
209	<i>Aeschynanthus micranthus</i> C.B.Clarke [NI0114]		Epiphyte	Not Evaluated (NE)
210	<i>Rhynchochum ellipticum</i> (Wall. ex D.Dietr.) A.DC. [MR0484]		Shrub	Not Evaluated (NE)
GNETACEAE Blume				
211	<i>Gnetum montanum</i> Markgr. [SWB0320]	Mamoi-lota (Ass)	Liana	EN (Chowdhary and Murti 2000)
HYDROCHARITACEAE Juss.				
212	<i>Ottelia alismoides</i> (L.) Pers. [MR0432]		Herb	Not Evaluated (NE)
HYDROLEACEAE R.Br.				
213	<i>Hydrolea zeylanica</i> (L.) Vahl [UKB0341]	Leheti-bann (Ass)	Herb	Not Evaluated (NE)
HYPERICACEAE Juss.				
214	<i>Hypericum japonicum</i> Thunb. [SWB0343]	Sonapuli (Bd)	Herb	Not Evaluated (NE)
ICACINACEAE MierS				
215	<i>Natsiatum herpeticum</i> Buch.-Ham. ex Arn. [TC0419]	Asu-paat (Ass)	Climber	Not Evaluated (NE)

Sl. No.	Botanical Name	Vernacular Name	Habit	Conservation status
JUGLANDACEAE DC.exPerleb				
216	<i>Engelhardia spicata</i> Lechen ex Blume [MR0278]	Naaru (Bd)	Tree	Not Evaluated (NE)
LAMIACEAE Martinov				
217	<i>Callicarpa arborea</i> Roxb. [NI0175]	Bann-Mala (Ass), Khojo (Bd)	Tree	Not Evaluated (NE)
218	<i>Clerodendrum indicum</i> (L.) Kuntze [TC0134]	Akal-Briksha (Ass), Eklabwr (Bd)	Shrub	Not Evaluated (NE)
219	<i>Clerodendrum infortunatum</i> L. [UKB0206]	Dhopat-tita (Ass), Lwkna (Bd)	Shrub	Not Evaluated (NE)
220	<i>Clerodendrum japonicum</i> (Thunb.) Sweet [SWB0555]	Dhopat-Tita (Ass)	Shrub	Not Evaluated (NE)
221	<i>Gmelina arborea</i> Roxb. [TC0319]	Gomari (Ass), Gambari (Bd)	Tree	Not Evaluated (NE)
222	<i>Gomphostemma ovatum</i> Wall, ex Benth. [MR0321]	Oma ki (Bd)	Shrub	Not Evaluated (NE)
223	<i>Gomphostemma parviflorum</i> Wall, ex Benth. [TC0322]		Shrub	Not Evaluated (NE)
224	<i>Holmskioldia sanguinea</i> Retz. [UKB0338]	Chatra-Pushpa (Ass)	Scandent shrub	Not Evaluated (NE)
225	<i>Leucas lavandulifolia</i> Sm. [TC0367]	Khangsinsa (Bd)	Herb	Not Evaluated (NE)
226	<i>Mesosphaerum suaveolens</i> (L.) Kuntze [SWB0344]	Tokma-Tita (Ass)	Shrub	Not Evaluated (NE)
227	<i>Pogostemon auricularius</i> (L.) Hassk. [TC0464]		Herb	Not Evaluated (NE)
228	<i>Premna milleflora</i> C.B.Clarke [MR0475]	Sil-Gomari (Ass)	Tree	Not Evaluated (NE)
229	<i>Premna mollissima</i> Roth [TC0576]	Gunaru (Ass)	Tree	Not Evaluated (NE)
230	<i>Rotheca serrata</i> (L.) Steane & Mabb. [NI0488]		Shrub	Not Evaluated (NE)
231	<i>Tectona grandis</i> L.f. [UKB0546]	Segun (Ass., Bd)	Tree	Not Evaluated (NE)
LAURACEAE Juss.				
232	<i>Actinodaphne obovata</i> (Nees) Blume [SWB0109]	Pati-Xonda (Ass)	Tree	Not Evaluated (NE)
233	<i>Cinnamomum bejolghota</i> (Buch.-Ham.) Sweet. [MR0197]	Naga-Dalcheni (Ass)	Tree	Not Evaluated (NE)
234	<i>Litsea glutinosa</i> (Lour.) C.B.Rob. [NI0364]	Baghnala (Bd)	Tree	EN (Mao & Gogoi 2006)
235	<i>Litsea monopetala</i> (Roxb.) Pers. [SB0376]	Soalu, Mugasong (Bd)	Shrub	Not Evaluated (NE)
236	<i>Litsea salicifolia</i> (Roxb. ex Nees) Hook.f. [NI0333]		Tree	Not Evaluated (NE)
237	<i>Machilus gamblei</i> King ex Hook.f. [SWB0382]	Som (Ass), Mojle (Bd)	Tree	Not Evaluated (NE)
238	<i>Phoebe bootanica</i> (Meisn.) M.Gangop. [MR0449]	Bannchom (Ass), Bonsom (Bd)	Tree	Not Evaluated (NE)
LECYTHIDACEAE Rich.				
239	<i>Careya arborea</i> Roxb. [UKB0183]	Kumbhi (Ass), Khum (Bd)	Tree	Not Evaluated (NE)
LENTIBULARIACEAE Rich.				
240	<i>Utricularia aurea</i> Lour. [TC0569]		Herb	Not Evaluated (NE)
LINACEAE DC. ex Perleb				
241	<i>Reinwardtia indica</i> Dumort. [NI0480]		Shrub	Not Evaluated (NE)

Sl. No.	Botanical Name	Vernacular Name	Habit	Conservation status
LINDERNIACEAE Borsch, Kai Müll. &Eb.Fisch.				
242	<i>Bonnaya antipoda</i> (L.) Druce [SWB0302]		Herb	Not Evaluated (NE)
243	<i>Bonnaya ruelloides</i> (Colsm.) Spreng.[TC0577]		Herb	Not Evaluated (NE)
244	<i>Torenia anagallis</i> (Burm.f.) Wannan, W.R.Barker&Y.S.Liang [TC0370]		Herb	Not Evaluated (NE)
245	<i>Torenia asiatica</i> L. [TC0560]		Herb	Not Evaluated (NE)
246	<i>Torenia crustacean</i> (L.) Cham. &Schltdl.[SWB0372]	Na biki (Bd)	Herb	Not Evaluated (NE)
LORANTHACEAE Juss.				
247	<i>Dendrophthoe falcata</i> (L.f.) Ettingsh. [NI0249]	Raghumala (Ass)	Parasite	Not Evaluated (NE)
248	<i>Helixanthera ligustrina</i> (Wall.) Danser [SWB0377]		Parasite	Not Evaluated (NE)
249	<i>Helixanthera parasitica</i> Lour. [TC0334]		Parasite	Not Evaluated (NE)
250	<i>Macrosolen cochinchinensis</i> (Lour.) van Tiegh. [SWB0384]		Parasite	Not Evaluated (NE)
251	<i>Scurrula parasitica</i> L. [TC0506]		Parasite	Not Evaluated (NE)
252	<i>Scurrula pulverulenta</i> (Wall.) G.Don [NI0507]		Parasite	Not Evaluated (NE)
LYTHRACEAE J.St.-Hil.				
253	<i>Cuphea carthagenensis</i> (Jacq.) J.F. Macbr. [SB0363]	San Laoti (Bd)	Herb	Not Evaluated (NE)
254	<i>Duabanga grandiflora</i> (Roxb. ex DC.) Walp. [SB0265]	Khokon (Ass), Mwkhragabgra (Bd)	Tree	Not Evaluated (NE)
255	<i>Lagerstroemia parviflora</i> Roxb. [SWB0517]	Sida (Ass./Bd)	Tree	Not Evaluated (NE)
256	<i>Lagerstroemia speciosa</i> (L.) Pers. [MR0357]	Ajhar (Ass), Aojhar (Bd)	Tree	Not Evaluated (NE)
257	<i>Rotala rotundifolia</i> (Buch.-Ham. ex Roxb.) Koehne [MR0487]		Herb	Not Evaluated (NE)
258	<i>Woodfordia fruticosa</i> (L.) Kurz [NI0573]		Shrub	LC (IUCN 2022)
MAGNOLIACEAE Juss.				
259	<i>Magnolia champaca</i> (L.) Baill. ex Pierre [SWB0403]	Titachopa (Ass), Titasap (Bd)	Tree	LC (IUCN 2022)
260	<i>Magnolia hodgsonii</i> (Hook.f. & Thomson) H.Keng [UKB0386]	Barhamthuri (Ass)	Tree	EN (Chowdhary and Murti 2000)
MALVACEAE Juss.				
261	<i>Abelmoschus moschatus</i> Medik. [TC0101]	Hagranibhendi (Bd)	Shrub	Not Evaluated (NE)
262	<i>Abroma augustum</i> (L.) L.f. [MR0520]	Ulatkambol (Ass), Mwsamegon (Bd)	Shrub	Not Evaluated (NE)
263	<i>Ayenia grandifolia</i> (DC.) Christenh. & Byng [SWB0172]	Tikoni-borua (Ass)	Climber	Not Evaluated (NE)
264	<i>Bombax ceiba</i> L. [MR0161]	Simolu (Ass), Sumli (Bd)	Tree	Not Evaluated (NE)
265	<i>Firmiana colorata</i> (Roxb.) R.Br.[NI0371]	Jhari-Udal (Ass)	Tree	Not Evaluated (NE)
266	<i>Grewia sapida</i> Roxb.ex DC. [UKB0500]	Phuhura (Ass)	Shrub	Not Evaluated (NE)
267	<i>Grewia serrulata</i> DC. [MR0327]	Kukur-khita (Ass), Swimalendu (Bd)	Shrub	Not Evaluated (NE)

Sl. No.	Botanical Name	Vernacular Name	Habit	Conservation status
268	<i>Kydia calycina</i> Roxb. [SWB0355]		Tree	Not Evaluated (NE)
269	<i>Mansonia dipikae</i> Purkay. [TC0393]	Sikri Badam (Bd)	Tree	Not Evaluated (NE)
270	<i>Melochia corchorifolia</i> L. [TC0396]		Herb	Not Evaluated (NE)
271	<i>Pterospermum acerifolium</i> (L.) Wild. [SWB0478]	Larubandha (Ass)	Tree	Not Evaluated (NE)
272	<i>Sida acuta</i> Burm.f. [TC0117]	BorSonborial (Ass)	Shrub	Not Evaluated (NE)
273	<i>Sida cordifolia</i> L. [NI0516]	Pichhola/Kotra (Ass)	Shrub	Not Evaluated (NE)
274	<i>Sida rhombifolia</i> L. [SB0356]		Shrub	Not Evaluated (NE)
275	<i>Sterculia lanceolata</i> var. <i>coccinea</i> (Jack) Phengklai [MR0273]	Nak-Chepeta (Ass), Jabkhrubiphang (Bd)	Shrub	Not Evaluated (NE)
276	<i>Sterculia villosa</i> Roxb. ex Sm. [MR0531]	Odal (Ass/Bd)	Tree	Not Evaluated (NE)
277	<i>Triumfetta rhomboidea</i> Jacq. [NI0564]	Agra (Ass)	Herb	Not Evaluated (NE)
278	<i>Urena lobata</i> L. [SWB0568]	Sonborial (Ass), Bomra (Bd)	Shrub	Not Evaluated (NE)
MARANTACEAE R.Br.				
279	<i>Phrynium pubinerve</i> Blume [UKB0452]	Lai-hulai (Bd)	Herb	Not Evaluated (NE)
280	<i>Schumannianthus benthamianus</i> (Kuntze) Veldkamp & I.M. Turner [MR0394]	Pati-Doi (Ass)	Shrub	Not Evaluated (NE)
MELASTOMATACEAE Juss.				
281	<i>Melastoma malabathricum</i> L. [MR0394]	Phutuki (Ass), Thingkhu/Thung-khu (Bd)	Shrub	Not Evaluated (NE)
282	<i>Osbeckia nepalensis</i> Hook. [TC0528]		Shrub	Not Evaluated (NE)
283	<i>Osbeckia nutans</i> Wall. ex C.B. Clarke [SWB0231]		Shrub	Not Evaluated (NE)
284	<i>Osbeckia stellata</i> Buch.-Ham. ex D. Don [TC0431]		Shrub	Not Evaluated (NE)
MELIACEAE Juss.				
285	<i>Aglaiia spectabilis</i> (Miq.) S.S. Jain & S. Bennet [SWB0515]	Amari (Ass)	Tree	LC (IUCN 2022)
286	<i>Aphanamixis polystachya</i> (Wall.) R. Parker [SB0137]	Boga-amari (Ass)	Tree	LC (IUCN 2022)
287	<i>Chisocheton cumingianus</i> subsp. <i>balansae</i> (C. DC.) Mabb. [TC0192]	Bandordima (Ass)	Tree	Not Evaluated (NE)
288	<i>Dysoxylum gotadhora</i> (Buch.-Ham.) Mabb. [MR0266]		Tree	Not Evaluated (NE)
289	<i>Toona ciliata</i> M. Roem. [MR0559]	Poma (Ass), Jiya (Bd)	Tree	LC (IUCN 2022)
MENISPERMACEAE Juss.				
290	<i>Cissampelos pareira</i> L. [MR0198]	Goria-lota (Ass)	Climber	Not Evaluated (NE)
291	<i>Cyclea barbata</i> Miers [UKB0430]		Liana	Not Evaluated (NE)

Sl. No.	Botanical Name	Vernacular Name	Habit	Conservation status
292	<i>Parabaena sagittata</i> Miers ex Hook.f. & Thomson [UKB0436]		Climber	Not Evaluated (NE)
293	<i>Stephania glandulifera</i> Miers [SWB0429]	Dumalu-Bendwng (Bd)	Climber	Not Evaluated (NE)
294	<i>Stephania japonica</i> (Thunb.) Miers [SB0529]	Goldowa (Ass), Ponel Khuga Bendwng (Bd)	Climber	Not Evaluated (NE)
295	<i>Tinospora cordifolia</i> (Willd.) Hook.f. & Thomson [SWB0558]	Khaguni-lota (Ass), Twinw-Rwngwi Bendwng (Bd)	Climber	EN (Modi & Mathad 2016)
MENYANTHACEAE Dumort.				
296	<i>Nymphoides cristata</i> (Roxb.) Kuntze [TC0423]		Herb	Not Evaluated (NE)
MORACEAE Gaudich.				
297	<i>Artocarpus chama</i> Buch.- Ham. [TC0144]	Cham-kothal (Ass)	Tree	Not Evaluated (NE)
298	<i>Artocarpus lacucha</i> Buch.-Ham. [TC0104]	Bohot/Dewatenga (Ass), Daowa (Bd)	Tree	Not Evaluated (NE)
299	<i>Ficus assamica</i> Miq. [TC0290]		Shrub	Not Evaluated (NE)
300	<i>Ficus auriculata</i> Lour. [NI0538]	Mann-Dimoru (Ass)	Tree	Not Evaluated (NE)
301	<i>Ficus benjamina</i> L. [TC0292]	Jori-Bor (Ass)	Tree	Not Evaluated (NE)
302	<i>Ficus curtipes</i> Corner [TC0145]	Kathalua-Bor (Ass)	Tree	Not Evaluated (NE)
303	<i>Ficus hispida</i> L.f. [TC0120]	Adumbra (Bd)	Tree	Not Evaluated (NE)
304	<i>Ficus nervosa</i> Roth [TC0295]		Tree	Not Evaluated (NE)
305	<i>Ficus racemosa</i> L. [SWB0121]	Jagya-Dimoru (Ass), Dombu-Khaosa (Bd)	Tree	Not Evaluated (NE)
306	<i>Ficus religiosa</i> L. [MR0412]	Aahot (Ass), Pakri (Bd)	Tree	Not Evaluated (NE)
307	<i>Ficus rumphii</i> Blume [MR0298]		Tree	Not Evaluated (NE)
308	<i>Maclura cochinchinensis</i> (Lour.) Corner [MR0383]		Shrub	Not Evaluated (NE)
309	<i>Streblus asper</i> Lour. [UKB0533]	Khoura (Ass), Seorai (Bd)	Tree	Not Evaluated (NE)
MYRTACEAE Juss.				
310	<i>Syzygium cumini</i> (L.) Skeels [TC0537]	Kala jam (Ass), Gwswm jam (Bd)	Tree	Not Evaluated (NE)
311	<i>Syzygium formosum</i> (Wall.) Mason [SWB0291]	Lohajam (Ass), Bon-Khangkrai (Bd)	Tree	Not Evaluated (NE)
312	<i>Syzygium jambos</i> (L.) Alston [SWB0539]	Golapi-jamuk (Ass), Gupru Jam (Bd)	Tree	Not Evaluated (NE)
313	<i>Syzygium nervosum</i> A.Cunn. ex DC. [SWB0540]		Tree	Not Evaluated (NE)
314	<i>Syzygium praecox</i> (Roxb.) Rathakr. & N.C.Nair [SWB0541]		Tree	Not Evaluated (NE)
NYMPHAEACEAE Salisb.				
315	<i>Nymphaea nouchali</i> Burm.f. [TC0297]	Bogabhet (Ass)	Herb	LC (IUCN 2022)
316	<i>Nymphaea rubra</i> Roxb. ex Andrews [MR0422]	Rongabhet (Ass)	Herb	LC (IUCN 2022)

Sl. No.	Botanical Name	Vernacular Name	Habit	Conservation status
OLEACEAE Hoffmanns. & Link				
317	<i>Jasminum auriculatum</i> Vahl [NI0352]	Jutika (Ass)	Shrub	Not Evaluated (NE)
ONAGRACEAE Juss.				
318	<i>Ludwigia hyssopifolia</i> (G.Don) Exell [TC0379]	HagraniBhanlu (Bd)	Herb	LC (IUCN 2022)
319	<i>Ludwigia octovalvis</i> (Jacq.) P.H.Raven [MR0380]	HagraniBhanlu (Bd)	Herb	Not Evaluated (NE)
ORCHIDACEAE Juss.				
320	<i>Acampe praemorsa</i> (Roxb.) Blatt. & McCann [MR0105]		Epiphyte	Not Evaluated (NE)
321	<i>Aerides multiflora</i> Roxb. [SB0313]	Ganesh-Kopou (Ass)	Epiphyte	EN (Chowdhary and Murti 2000)
322	<i>Aerides odorata</i> Lour. [NI0112]	Jethua-Kopou (Ass)	Epiphyte	EN (Chowdhary and Murti 2000)
323	<i>Bulbophyllum crassipes</i> Hook.f. [SB0315]		Epiphyte	Not Evaluated (NE)
324	<i>Bulbophyllum roxburghii</i> (Lindl.) Rehb.f. [UKB0169]		Epiphyte	Not Evaluated (NE)
325	<i>Cymbidium aloifolium</i> (L.) Sw. [SWB0232]	Mota-Kopou (Ass)	Epiphyte	EN (Chowdhary and Murti 2000)
326	<i>Dendrobium aphyllum</i> (Roxb.) C.E.C. Fischer [SWB0244]	Salikithutia-Kopou (Ass)	Epiphyte	EN (Chowdhary and Murti 2000)
327	<i>Dendrobium fimbriatum</i> Hook. [SWB0433]		Epiphyte	Not Evaluated (NE)
328	<i>Dendrobium fugax</i> Rehb.f.[TC0306]		Epiphyte	EN (Vedet <i>al.</i> 2003)
329	<i>Dendrobium jenkinsii</i> Wall. ex Lindl. [TC0246]		Epiphyte	Not Evaluated (NE)
330	<i>Dendrolirium lasiopetalum</i> (Willd.) S.C.Chen&J.J.Wood [MR0283]		Epiphyte	Not Evaluated (NE)
331	<i>Gastrochilus obliquus</i> (Lindl.) Kuntze var. <i>obliquus</i> [NI0111]		Epiphyte	Not Evaluated (NE)
332	<i>Gastrochilus obliquus</i> var. <i>suavis</i> (Seidenf.) Z.H.Tsi [TC0314]		Epiphyte	Not Evaluated (NE)
333	<i>Geodorum densiflorum</i> (Lamk.) Schltr. [NI0168]		Herb	Not Evaluated (NE)
334	<i>Goodyera procera</i> (Ker Gawl.) Hook. [NI0324]		Herb	Not Evaluated (NE)
335	<i>Papilionanthe teres</i> (Roxb.) Schltr. [SWB0435]	Bhatouphul (Ass)	Epiphyte	EN (Chowdhary & Murti 2000)
336	<i>Pholidota imbricate</i> Hook. [SB0450]		Epiphyte	Not Evaluated (NE)
337	<i>Rhynchostylis retusa</i> (L.) Blume [SB0483]	Kopouphul (Ass), Kwpou (Bd)	Epiphyte	EN (Chowdhary & Murti 2000)
OXALIDACEAE R.Br.				
338	<i>Biophytum sensitivum</i> (L.) DC. [SB0156]	Bann-narenga (Ass)	Herb	Not Evaluated (NE)

Sl. No.	Botanical Name	Vernacular Name	Habit	Conservation status
339	<i>Oxalis corniculata</i> L. [SWB0245]	Singri (Bd)	Herb	Not Evaluated (NE)
PAPAVERACEAE Juss.				
340	<i>Argemone mexicana</i> L. [TC0140]	Xialkata (Ass), Ganda Salai (Bd)	Herb	Not Evaluated (NE)
PASSIFLORACEAE Juss. ex Roussel				
341	<i>Passiflora foetida</i> L. [MR0439]		Climber	Not Evaluated (NE)
PENTAPHYLACACEAE Engl.				
342	<i>Eurya acuminata</i> DC. [MR0288]	Murmura (Ass)	Shrub	Not Evaluated (NE)
PHYLLANTHACEAE Martinov				
343	<i>Antidesma acidum</i> Retz. [NI0135]	Lapha-saiko (Bd)	Shrub	Not Evaluated (NE)
344	<i>Antidesma bunius</i> (L.) Spreng. [TC0287]		Tree	Not Evaluated (NE)
345	<i>Aporosa octandra</i> (Buch.-Ham. ex D.Don) Vickery [NI0256]	Bor-heloch (Ass)	Tree	Not Evaluated (NE)
346	<i>Baccaurea ramiflora</i> Lour. [SB0260]	Lerko/Khusumai (Bd)	Tree	Not Evaluated (NE)
347	<i>Bischofia javanica</i> Blume [SWB0157]	Urium (Ass)	Tree	Not Evaluated (NE)
348	<i>Breynia androgyna</i> (L.) Chakrab. & N.P. Balakr. [SWB0502]		Shrub	Not Evaluated (NE)
349	<i>Breynia retusa</i> (Dennst.) Alston [SWB0316]		Shrub	Not Evaluated (NE)
350	<i>Breynia vitis-idaea</i> (Burm.f.) C.E.C. Fisch. [MR0164]		Shrub	Not Evaluated (NE)
351	<i>Bridelia assamica</i> Hook.f. [UKB0165]		Tree	Not Evaluated (NE)
352	<i>Bridelia stipularis</i> (L.) Blume [SWB0272]		Shrub	Not Evaluated (NE)
353	<i>Bridelia tomentosa</i> Blume [TC0387]	Paat-Kuhir (Ass)	Tree	Not Evaluated (NE)
354	<i>Flueggea virosa</i> (Roxb. ex Willd.) Royle [MR0308]	Shuken (Bd)	Shrub	Not Evaluated (NE)
355	<i>Glochidion ellipticum</i> Wight [TC0163]	Panichhitiki (Ass)	Tree	Not Evaluated (NE)
356	<i>Glochidion multiloculare</i> (Roxb. ex Willd.) Voigt [NI0317]	Garumora (Ass), Thaka bhipang (Bd)	Shrub	Not Evaluated (NE)
357	<i>Phyllanthus emblica</i> L. [TC0286]	Amlokhi (Ass), Amlai (Bd)	Tree	Not Evaluated (NE)
358	<i>Phyllanthus reticulatus</i> Poir. [NI0455]	Bann-amlokhi (Ass)	Shrub	Not Evaluated (NE)
359	<i>Phyllanthus sikkimensis</i> Müll.Arg. [MR0186]		Shrub	Not Evaluated (NE)
360	<i>Phyllanthus rheedei</i> Wight [MR0219]		Herb	Not Evaluated (NE)
361	<i>Phyllanthus urinaria</i> L. [MR0458]	Mati-Amlokhi (Ass), Gwthwi amlai (Bd)	Herb	Not Evaluated (NE)
PIPERACEAE Giseke				
362	<i>Peperomia pellucida</i> (L.) Kunth [MR0443]	Paani-Noua (Ass)	Herb	Not Evaluated (NE)

Sl. No.	Botanical Name	Vernacular Name	Habit	Conservation status
363	<i>Piper betleoides</i> C.DC. [TC0460]		Shrub	Not Evaluated (NE)
364	<i>Piper peepuloides</i> Roxb. [UKB0254]		Climber	Not Evaluated (NE)
PLAMBAGINACEAE Juss.				
365	<i>Plumbago zeylanica</i> L. [SWB0462]	Agwrsitagapur (Bd)	Herb	Not Evaluated (NE)
PLANTAGINACEAE Juss.				
366	<i>Limnophila aromatica</i> (Lam.) Merr. [MR0522]		Herb	Not Evaluated (NE)
367	<i>Limnophila heterophylla</i> (Roxb.) Benth. [NI0369]	Xialbhobora (Ass)	Herb	Not Evaluated (NE)
368	<i>Scoparia dulcis</i> L. [MR0505]	Bomphangrakeb (Bd)	Herb	Not Evaluated (NE)
POACEAE Barnhart				
369	<i>Arundo donax</i> L. [UKB0146]	Nal (Ass), Nwlw (Bd)	Herb	Not Evaluated (NE)
370	<i>Axonopus compressus</i> (Sw.) P.Beauv. [SWB0148]	Dolisa-Bann (Ass)	Herb	Not Evaluated (NE)
371	<i>Centotheca lappacea</i> (L.) Desv. [NI0191]		Herb	Not Evaluated (NE)
372	<i>Chrysopogon aciculatus</i> (Retz.) Trin. [SB0196]	Karshola-Bann (Ass), Samthai (Bd)	Herb	Not Evaluated (NE)
373	<i>Cymbopogon citratus</i> (DC.) Stapf [TC0233]		Herb	Not Evaluated (NE)
374	<i>Cynodon dactylon</i> (L.) Pers. [SWB0234]	Dubari (Ass), Dubri Hagra (Bd)	Herb	Not Evaluated (NE)
375	<i>Digitaria ciliaris</i> (Retz.) Koeler [NI0253]		Herb	Not Evaluated (NE)
376	<i>Digitaria longiflora</i> (Retz.) Pers. [MR0461]		Herb	Not Evaluated (NE)
377	<i>Echinochloa crus-galli</i> (L.) P.Beauv. [SWB0267]		Herb	Not Evaluated (NE)
378	<i>Eleusine indica</i> (L.) Gaertn. [TC0276]	Babasa-Bann (Ass)	Herb	Not Evaluated (NE)
379	<i>Eragrostis tenella</i> (L.) P.Beauv. ex Roem. & Schult. [TC0280]		Herb	Not Evaluated (NE)
380	<i>Eragrostis unioides</i> (Retz.) Nees ex Steud. [SWB0493]		Herb	Not Evaluated (NE)
381	<i>Imperata cylindrica</i> (L.) P.Beauv. [TC0348]	Kher (Ass), Thuri (Bd)	Herb	Not Evaluated (NE)
382	<i>Leersia hexandra</i> Sw. [MR0365]	Erali-Ghaah (Ass)	Herb	Not Evaluated (NE)
383	<i>Microstegium fasciculatum</i> (L.) Henrard [MR0405]	Khorika (Ass)	Herb	Not Evaluated (NE)
384	<i>Narenga porphyrocoma</i> (Hance) Bor [SWB0492]	Barenga (Ass)	Herb	Not Evaluated (NE)
385	<i>Oplismenus burmanni</i> (Retz.) P.Beauv. [UKB0425]		Herb	Not Evaluated (NE)
386	<i>Oplismenus compositus</i> (L.) P.Beauv. [NI0444]	Baahpotia-Bann (Ass)	Herb	Not Evaluated (NE)
387	<i>Paspalum conjugatum</i> P.J.Bergius [NI0438]	Kunj-Ghaah (Ass)	Herb	Not Evaluated (NE)
388	<i>Phragmites karka</i> (Retz.) Trin. ex Steud. [UKB0451]	Khagori (Ass)	Herb	Not Evaluated (NE)

Sl. No.	Botanical Name	Vernacular Name	Habit	Conservation status
389	<i>Pogonatherum crinitum</i> (Thunb.) Kunth [SB0463]		Herb	Not Evaluated (NE)
390	<i>Saccharum spontaneum</i> L. [SWB0470]	Kahua (Ass), Khasi Hagra (Bd)	Herb	Not Evaluated (NE)
391	<i>Sacciolepis myosuroides</i> (R.Br.) Chase ex E.G.Camus & A.Camus [TC0495]		Herb	Not Evaluated (NE)
392	<i>Setaria pumila</i> (Poir.) Roem. & Schult. [SWB0513]	Khusingra Meotugra (Bd)	Herb	Not Evaluated (NE)
393	<i>Thysanolaena latifolia</i> (Roxb. ex Hornem.) Honda [SWB0557]	Jharu-Bann (Ass)	Shrub	Not Evaluated (NE)
394	<i>Tripidium ravennae</i> (L.) H.Scholz [MR0281]	Ekora (Ass), Enkhwr (Bd)	Herb	Not Evaluated (NE)
395	<i>Urochloa distachya</i> (L.) T.Q.Nguyen [TC0162]		Herb	Not Evaluated (NE)
POLYGALACEAE Hoffmanns. & Link				
396	<i>Polygala arvensis</i> Willd. [TC0465]		Herb	Not Evaluated (NE)
POLYGONACEAE Juss.				
397	<i>Persicaria chinensis</i> (L.) H.Gross [MR0426]	Wngkhamgwjang (Bd)	Herb	Not Evaluated (NE)
398	<i>Persicaria hydropiper</i> (L.) Delarbre [SWB0445]	Besongali (Bd)	Herb	Not Evaluated (NE)
399	<i>Persicaria orientalis</i> (L.) Spach [SWB0446]		Herb	Not Evaluated (NE)
400	<i>Persicaria strigosa</i> (R.Br.) H.Gross [TC0447]	Alari gwja (Bd)	Herb	Not Evaluated (NE)
401	<i>Polygonum plebeium</i> R.Br. [TC0466]		Herb	Not Evaluated (NE)
402	<i>Rumex maritimus</i> L. [SWB0490]		Herb	Not Evaluated (NE)
PONTEDERIACEAE Kunth				
403	<i>Pontederia crassipes</i> Mart. [TC0410]	Ajnai (Bd)	Herb	Not Evaluated (NE)
404	<i>Pontederia hastata</i> L. [TC0468]	Kwslipana (Bd)	Herb	Not Evaluated (NE)
PORTULACACEAE Juss.				
405	<i>Portulaca oleracea</i> L. [TC0494]	Malbhog-Xutura (Ass), Hangswgarama (Bd)	Herb	Not Evaluated (NE)
PRIMULACEAE Batsch ex Borkh.				
406	<i>Ardisia solanacea</i> Roxb. [SB0139]	Sauldhoa (Ass)	Shrub	Not Evaluated (NE)
407	<i>Maesa indica</i> (Roxb.) Sweet [SB0385]		Shrub	Not Evaluated (NE)
RANUNCULACEAE Juss.				
408	<i>Clematis zeylanica</i> (L.) Poir. [NI0418]	Sagol-loti (Ass)	Climber	Not Evaluated (NE)
RHAMNACEAE Juss.				
409	<i>Gouania tiliifolia</i> Lam. [NI0325]	Jwarpat (Ass)	Climber	Not Evaluated (NE)
410	<i>Rhamnus napalensis</i> (Wall.) M.A. Lawson [SWB0580]	Biringa (Ass)	Scandent shrub	Not Evaluated (NE)
411	<i>Ziziphus mauritiana</i> Lam. [TC0481]	Bogori (Ass), Bwigri (Bd)	Shrub	Not Evaluated (NE)

Sl. No.	Botanical Name	Vernacular Name	Habit	Conservation status
RHIZOPHORACEAE Pers.				
412	<i>Carallia brachiata</i> (Lour.) Merr. [SWB0180]	Mahi-Thekera (Ass)	Tree	Not Evaluated (NE)
ROSACEAE Juss.				
413	<i>Potentilla indica</i> (Andrews) Th.Wolf [SB0471]	Gorai ki (Bd)	Herb	Not Evaluated (NE)
414	<i>Rubus rugosus</i> Sm. [MR0489]		Scandent shrub	Not Evaluated (NE)
RUBIACEAE Juss.				
415	<i>Catunaregam spinosa</i> (Thunb.) Tirveng. [TC0188]	Mon (Ass)	Shrub	Not Evaluated (NE)
416	<i>Coffea benghalensis</i> B.Heyne ex Roth [TC0208]	Kothnaphul (Ass)	Shrub	Not Evaluated (NE)
417	<i>Meyna spinosa</i> Roxb. ex Link [NI0401]	Ketkora (Ass), Mwina (Bd)	Tree	Not Evaluated (NE)
418	<i>Morinda angustifolia</i> Roxb. [SB0412]	Asukath/Akalbih, Asho (Bd)	Shrub	Not Evaluated (NE)
419	<i>Mussaenda roxburghii</i> Hook.f. [SB0416]		Shrub	Not Evaluated (NE)
420	<i>Mycetia nutans</i> (R.Br. ex Kurz) Razafim. & B.Bremer [SWB0417]		Shrub	Not Evaluated (NE)
421	<i>Neolamarckia cadamba</i> (Roxb.) Bosser [UKB0420]	Kadam (Ass), Kwdwm (Bd)	Tree	Not Evaluated (NE)
422	<i>Oldenlandia corymbosa</i> L. [SWB0526]	Daoshri-ating (Bd)	Herb	Not Evaluated (NE)
423	<i>Paederia foetida</i> L. [UKB0434]	Vedelota (Ass), Khipibendwng (Bd)	Climber	Not Evaluated (NE)
424	<i>Pavetta indica</i> L. [SWB0440]		Shrub	Not Evaluated (NE)
425	<i>Psychotria denticulata</i> Wall. [TC0425]		Shrub	Not Evaluated (NE)
426	<i>Psychotria monticola</i> Kurz [MR0477]		Shrub	Not Evaluated (NE)
427	<i>Scleromitron diffusum</i> (Willd.) R.J.Wang [MR0331]	Daoshri-ating (Bd)	Herb	Not Evaluated (NE)
428	<i>Spermacoce hispida</i> L. [SWB0578]		Herb	Not Evaluated (NE)
429	<i>Spermacoce latifolia</i> Aubl. [TC0525]		Herb	Not Evaluated (NE)
430	<i>Spermacoce ocymoides</i> Burm.f. [NI0330]		Herb	Not Evaluated (NE)
RUTACEAE Juss.				
431	<i>Aegle marmelos</i> (L.) Corrêa [TC0110]	Bel (Ass, Bd)	Tree	VU (Rawat 2008)
432	<i>Bergera koenigii</i> L. [MR0414]	Narasingha (Ass), Nwrsing (Bd)	Shrub	Not Evaluated (NE)
433	<i>Citrus maxima</i> (Burm.) Merr. [MR0200]	Jhumratenga/Rebab tenga (Ass), Jumbra (Bd)	Tree	Not Evaluated (NE)
434	<i>Citrus medica</i> L. [NI0123]	Jora-nemu (Ass), Hagraniibu (Bd)	Shrub	Not Evaluated (NE)

Sl. No.	Botanical Name	Vernacular Name	Habit	Conservation status
435	<i>Glycosmis pentaphylla</i> (Retz.) DC. [MR0318]	Senglodi (Ass)	Shrub	Not Evaluated (NE)
436	<i>Micromelum integerrimum</i> (Roxb. ex DC.) Wight & Arn. ex M. Roem. [SWB0404]		Shrub	Not Evaluated (NE)
437	<i>Murraya paniculata</i> (L.) Jack [SB0476]		Shrub	Not Evaluated (NE)
438	<i>Zanthoxylum asiaticum</i> (L.) Appelhans, Groppo & J. Wen [TC0373]	Khwijwambiphang (Bd)	Scandent shrub	Not Evaluated (NE)
439	<i>Zanthoxylum rhetsa</i> (Roxb.) DC. [SWB0524]	Bajranali (Ass), Bojlori (Bd)	Tree	Not Evaluated (NE)
SABIACEAE Blume				
440	<i>Meliosma simplicifolia</i> (Roxb.) Walp. [UKB0395]		Tree	Not Evaluated (NE)
SALICACEAE Mirb.				
441	<i>Casearia vareca</i> Roxb. [MR0184]	Sagol-ladi (Ass), Seltao Bhiphang (Bd)	Shrub	Not Evaluated (NE)
442	<i>Flacourtia jangomas</i> (Lour.) Raeusch. [TC0250]	Ponelbiphang (Bd)	Tree	Rare (Lalfakjualet <i>al.</i> 2007)
SAPINDACEAE Juss.				
443	<i>Aesculus assamica</i> Griff. [SB0115]	Raman-Bihh (Ass), Gorai bidwi (Bd)	Tree	Not Evaluated (NE)
444	<i>Allophylus serratus</i> (Roxb.) Kurz [MR0201]		Shrub	Not Evaluated (NE)
445	<i>Cardiospermum halicacabum</i> L. [MR0181]	Kopalphuta-Bann (Ass)	Climber	Not Evaluated (NE)
446	<i>Lepisanthes senegalensis</i> (Poir.) Leenh [NI0360]	Bann-gaadhi (Ass)	Shrub	Not Evaluated (NE)
SMILACACEAE Vent.				
447	<i>Smilax ovalifolia</i> Roxb. ex D. Don [SWB0519]		Climber	Not Evaluated (NE)
448	<i>Smilax perfoliata</i> Lour. [MR0102]	Baahachora-Lota (Ass)	Climber	Not Evaluated (NE)
SOLANACEAE Juss.				
449	<i>Physalis halicacabum</i> Crantz [UKB0459]	Ganga-topa (Bd)	Herb	Not Evaluated (NE)
450	<i>Solanum nigrum</i> L. [SWB0521]	Mwisung (Bd)	Herb	Not Evaluated (NE)
451	<i>Solanum torvum</i> Sw. [SWB0368]	Bhit-tita (Ass), Khuntainara (Bd)	Shrub	Not Evaluated (NE)
STAPHYLEACEAE Martinov				
452	<i>Dalrympelea pomifera</i> Roxb. [MR0565]	Pani-leteku (Ass)	Tree	Not Evaluated (NE)
TAMARICACEAE Link				
453	<i>Tamarix dioica</i> Roxb. ex Roth [NI0545]	Jhaobann (Ass)	Shrub	Not Evaluated (NE)
TETRAMELACEAE Airy Shaw				
454	<i>Tetrameles nudiflora</i> R.Br. [TC0553]	Bhelkor/Bhelu (Ass), Bholam (Bd)	Tree	Not Evaluated (NE)

Sl. No.	Botanical Name	Vernacular Name	Habit	Conservation status
THEACEAE Mirb. ex Ker Gawl.				
455	<i>Schima wallichii</i> (DC.) Korth. [SWB0503]	Nagabher (Ass), Gugra/Kamsuriphang (Bd)	Tree	Not Evaluated (NE)
URTICACEAE Juss.				
456	<i>Boehmeria virgata</i> var. <i>macrostachya</i> (Wight) Friis & Wilmot-Dear [SWB0159]		Shrub	Not Evaluated (NE)
457	<i>Dendrocnide sinuata</i> (Blume) Chew [MR0247]	Sorat (Ass), Koma (Bd)	Shrub	Not Evaluated (NE)
458	<i>Elatostema platyphyllum</i> Wedd. [MR0530]		Herb	Not Evaluated (NE)
459	<i>Gonostegia triandra</i> (Blume) Miq. [SB0323]		Herb	Not Evaluated (NE)
460	<i>Oreocnide integrifolia</i> (Gaudich.) Miq. [NI0427]		Tree	Not Evaluated (NE)
461	<i>Pouzolzia zeylanica</i> (L.) Benn. [MR0473]		Herb	Not Evaluated (NE)
462	<i>Sarcochlamys pulcherrima</i> (Roxb.) Gaudich. [MR0526]		Shrub	Not Evaluated (NE)
VERBENACEAE J.St.-Hil.				
463	<i>Lantana camara</i> L. [SWB0359]	Guu-Phool (Ass)	Shrub	Not Evaluated (NE)
464	<i>Lippia alba</i> (Mill.) N.E.Br. ex Britton & P. Wilson [MR0374]	Ontai -Bajab (Bd)	Shrub	Not Evaluated (NE)
465	<i>Phyla nodiflora</i> (L.) Greene [MR0453]		Herb	Not Evaluated (NE)
VITACEAE Juss.				
466	<i>Ampelocissus barbata</i> (Wall.) Planch. [SB0227]	Goaliya Lota (Ass)	Climber	Not Evaluated (NE)
467	<i>Ampelocissus latifolia</i> (Roxb.) Planch. [MR0205]		Climber	Not Evaluated (NE)
468	<i>Causonis trifolia</i> (L.) Mabb. & J.Wen [NI0189]	Sepeta Lota (Ass)	Climber	Not Evaluated (NE)
469	<i>Cissus repanda</i> (Wight & Arn.) Vahl [SB0199]		Climber	Not Evaluated (NE)
470	<i>Leea alata</i> Edgew. [SWB0362]	Bon-ou (Ass)	Shrub	Not Evaluated (NE)
471	<i>Leea compactiflora</i> Kurz [TC0225]		Shrub	Not Evaluated (NE)
472	<i>Leea indica</i> (Burm.f.) Merr. [SB0375]	Athubhanga (Ass)	Shrub	Not Evaluated (NE)
473	<i>Tetrastigma angustifolium</i> (Roxb.) Planch. [SWB0554]	Dwosrem (Bd)	Climber	Not Evaluated (NE)
474	<i>Tetrastigma bracteolatum</i> (Wall.) Planch. [MR0207]		Climber	Not Evaluated (NE)
ZINGIBERACEAE Martinov				
475	<i>Alpinia nigra</i> (Gaertn.) Burtt [NI0126]	Bogi-Tora (Ass), Tarai (Bd)	Herb	Not Evaluated (NE)
476	<i>Boesenbergia longiflora</i> (Wall.) Kuntze [SWB0160]		Herb	Not Evaluated (NE)
477	<i>Curcuma amada</i> Roxb. [MR0226]		Herb	Not Evaluated (NE)
478	<i>Curcuma aromatica</i> Salisb. [MR0133]	Keturi (Ass), Khatri (Bd)	Herb	Not Evaluated (NE)
479	<i>Zingiber cernuum</i> Dalzell [SWB0579]		Herb	Not Evaluated (NE)



DISCUSSION

Barooah & Ahmed (2014) reported 3832 species of flowering plants from Assam representing 1394 genera from 236 families and Borthakur *et al.* (2018) reported 1385 species from Bodoland Territorial Area District (BTAD) under 712 genera of 167 families, 12.5 % and 34.58 % of which recorded in Raimona National Park (RNP) respectively.

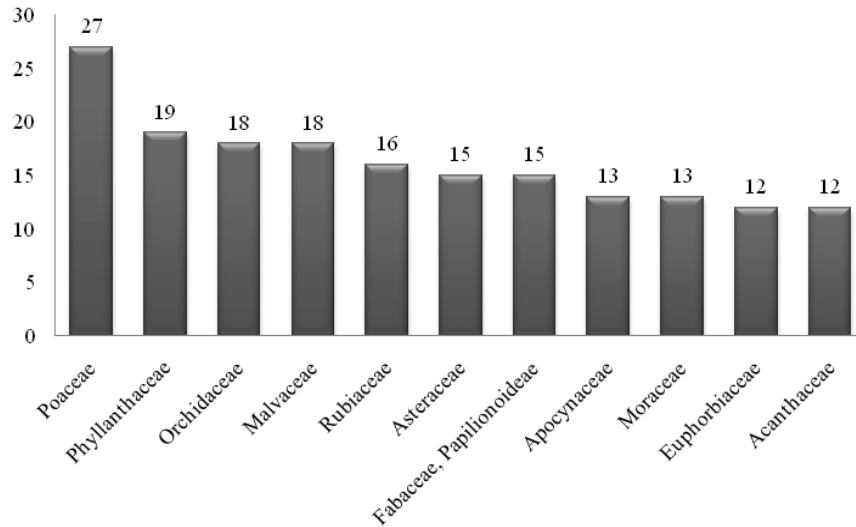


Figure 2. Dominant families in the flora of Raimona National Park.

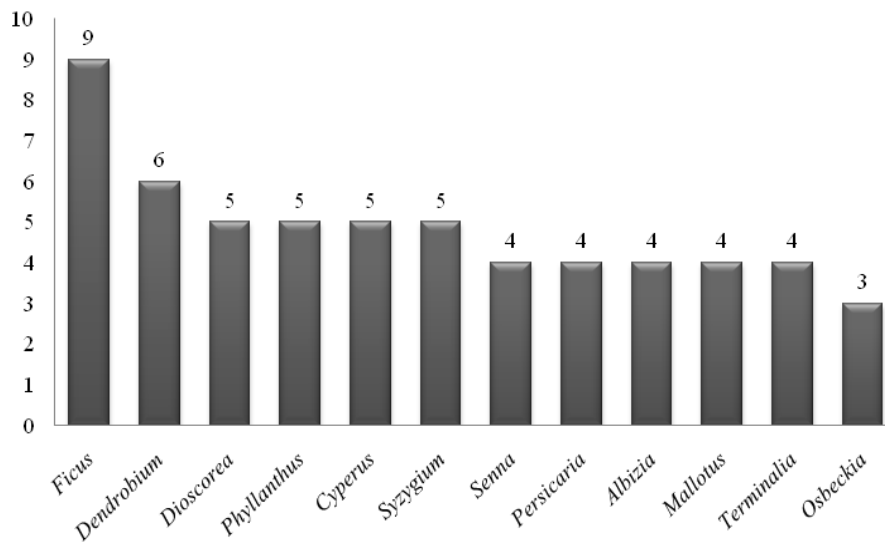


Figure 3. Dominant genera found in the flora of Raimona National Park.

Page 74. PLATE II. Some interesting floristic elements from Raimona National Park: **A.** *Barleria strigosa*; **B.** *Breynia androgyna*; **C.** *Eranthemum griffithii*; **D.** *Ficus assamica*; **E.** *Euphorbia indica*; **F.** *Strobilanthes sabiniana*; **G.** *Strobilanthes anisophylla*; **H.** *Osbeckia nutnas*; **I.** *Reinwardtia indica*; **J.** *Scurrula pulverulenta*; **K.** *Osbeckia stellata*; **L.** *Begonia nepalensis*; **M.** *Gastrochilus obliquus* var. *suavis*; **N.** *Limnophila aromatica*; **O.** *Strobilanthes hamiltoniana*; **P.** *Lobelia zeylanica*; **Q.** *Impatiens trilobata*; **R.** *Psychotria monticola*

The dominant families in RNP of the recorded floras are Poaceae (27 spp.), Phyllanthaceae (19 spp.), Orchidaceae (18 spp), Malvaceae (18 spp), Rubiaceae (16 spp.), Asteraceae (15 spp.), Fabaceae/Papilionoideae (15 spp.), Apocynaceae (13), Moraceae (13), Euphorbiaceae (12 spp.)

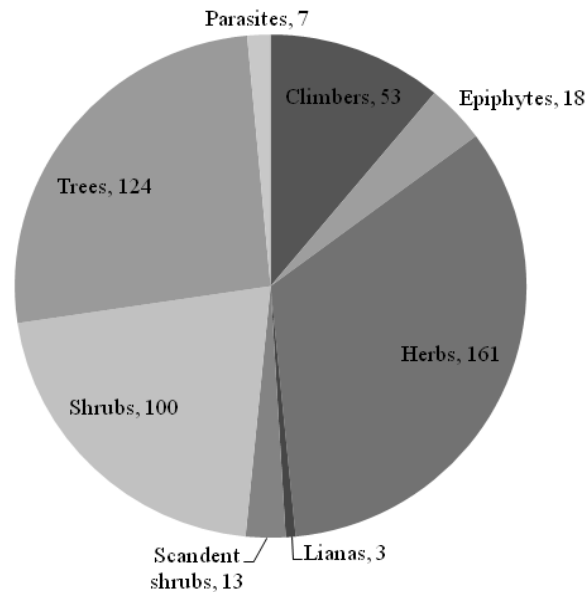


Figure 4. Graphical presentation of habit groups of plants recorded from the Raimona National Park.

and Acanthaceae (12 spp.) accounting for 37.16 % of the total taxa (Figure 2). The dominant genera of the area are *Ficus* with nine species, *Dendrobium* with six species, *Dioscorea*, *Phyllanthus*, *Cyperus*, and *Syzygium* with five species each, *Albizia*, *Mallotus*, *Persicaria*, *Senna*, and *Terminalia* with four species each, *Osbeckia* with three species (Figure 3).

Out of 479 taxa, it includes 161 herbs (33.61%), 124 trees (25.88 %), 100 shrubs (20.87 %), 53 climbers (11.06 %), 18 epiphytes (3.75 %), 13 scandent shrubs (2.71 %), seven parasites (1.46 %), and three Lianas (0.63 %) (Figure 4). A total of 24 species has been recognised as invasive i.e. *Ageratum conyzoides*, *Alocasia macrorrhizos*, *Amaranthus spinosus*, *A. viridis*, *Bidens pilosa*, *Canna indica*, *Cannabis sativa*, *Chromolaena odorata*, *Crassocephalum crepidioides*, *Eclipta prostrata*, *Pontederia crassipes*, *Gamochaeta pensylvanica*, *Heliotropium indicum*, *Imperata cylindrica*, *Ipomoea carnea*, *I. hederifolia*, *Lantana camara*, *Melochia corchorifolia*, *Camonea umbellata*, *Mikania micrantha*, *Parthenium hysterophorus*, *Solanum torvum*, *Spermacoce latifolia*, *Xanthium strumarium* where Asteraceae represents highest number of it with nine species followed by Convolvulaceae with three species.

In the present study, a total of 33 species were found to be RET categories (Table 1). Out of the 33 RET taxa, 15 species are found as Endangered (EN) i.e. *Dioscorea bulbifera*, *Tacca integrifolia*, *Aerides multiflora*, *Aerides odorata*, *Cymbidium aloifolium*, *Dendrobium aphyllum*, *Gnetum montanum*, *Magnolia bodgsonii*, *Papilionanthe teres*, *Rauwolfia serpentina*, *Rhynchosytilis retusa*, *Tinospora cordifolia*, *Litsea glutinosa*, *Dendrobium fugax*, *Garcinia pedunculata*, five species are Vulnerable (VU) category (*Aegle marmelos*, *Oroxylum indicum*, *Terminalia arjuna*, *Terminalia chebula*, *Gynocardia odorata*), one Rare species (*Flacourtia jangomas*), and 12 species are Least Concern (LC) category (*Aglaia spectabilis*, *Aphanamixis polystachya*, *Bauhinia purpurea*, *Delonix regia*, *Ludwigia hyssopifolia*, *Magnolia champaca*, *Mangifera sylvatica*, *Nymphaea nouchali*, *Nymphaea rubra*, *Shorea robusta*, *Toona ciliata*, *Woodfordia fruticosa*). Some of the rare species encountered inside the National Park are *Begonia nepalensis*, *Osbeckia stellata*, *O. nutans*, *Strobilanthes sabineana*, *S. hamiltoniana*, etc. Recently, Basumatary *et al.* (2022) reported *Strobilanthes anisophylla* from RNP as a new distribution record for the Assam state of India.

Acknowledgements

Authors are very much thankful to the Department of Environment and Forest, Government of Assam and Bodoland Territorial Council for their co-operation and collaboration. Authors sincerely acknowledge International Fund for Animal Welfare-IFAW for the major funding support in restoration and conservation of Greater Manas landscape. They are thankful to Mr. A. Swargoyary IFS, PCCF & Ex-CHD of BTC and Mr. R. K. Brahma, Divisional Forest Officer, Kachugaon Forest Division for providing necessary permission and other logistic supports. Authors extend sincere thanks to Dr. Rahul Kaul, CEO of WTI and Dr. Samir K. Sinha for their valuable suggestions and constant support. They are also indebted to all the Range Officers and frontline forest staffs including members Non-Government Organization of Raimona National Park for their constant support and kind help during the field surveys. Authors are also thankful to Prof. A.P. Das, Department of Botany, Rajiv Gandhi University for his constructive suggestions and insightful comments.

LITERATURE CITED

- Baishya, A.K. & Borah, P.J. 2002. Study and conservation of the plant biodiversity of Dibru Saikhowa Biosphere Reserve, Dibrugarh and Tinsukia district, Assam. *In: J.K. Sharma et al. (eds.), Biosphere Reserves in India and their management.* MoEF, New Delhi and FRI, Kerala. Pp. 193 – 198.
- Baishya, A.K. 1999. Assam. *In: V. Mudgal & P.K. Hajra (eds.), Floristic Diversity and Conservation Strategies in India.* Botanical Survey of India, Calcutta. Pp. 615 – 654.
- Balakhrisnan, N.P. 1981, 1982. *Flora of Jowai.* Vols. I – II. Botanical Survey of India, Howrah.
- Barooah, C. & Ahmed, I. 2014. *Plant Diversity of Assam - A checklist of Angiosperms and gymnosperms.* Assam science technology and environment council. Guwahati, Assam, India
- Barua, I.C. 1992. *Systematic studies of the Angiosperms of Kamrup District, Assam.* Ph.D. Thesis, Gauhati University.
- Barua, I.C. 2000. *Orchid flora of Kamrup district, Assam.* Bishen Singh Mahendra Pal Singh, Dehradun.
- Barua, I.C.; Chowdhury, S. & Neogi, B. 1988. Primitive land plants (Angiosperms) and their distribution pattern in Assam. *Journal of Economic and Taxonomic Botany* 12(1): 81 – 92.
- Basumatary, S.; Islam, N.; Baruah, S.; Borkataki, U.K.; Chhetri, T. & Rahman, M. 2022. Two new distribution records of *Strobilanthes* Blume (Acanthaceae) for Assam, India. *Plant Science Today* 9(sp1): 33 – 36. <https://doi.org/10.14719/pst.1685>
- Begum, S.S. 2008. *Floristic diversity of Nameri National Park, Assam with special reference to rare, endangered and endemic plants.* Ph.D. Thesis, Gauhati University.
- Bora, P.J. & Kumar, Y. 2003. *Floristic Diversity of Assam– Study of Pabitora Wildlife Sanctuary.* Daya Publishing House, Delhi.
- Boro, A. 2016. *Floristic study of Udalguridistrict, Assam.* Ph. D. Thesis. Gauhati University.
- Borthakur, S.K.; Baro, D.; Bawri, A. & Boro A. 2018. *Flora of BTAD (Bodoland Territorial Area District, Assam),* Vols. I – IV. Eastern Book House, Guwahati.
- Chowdhary, H.J. & Murti, S.K. 2000. *Plant diversity and conservation in India – An overview.* Bishen Singh and Mahendra Pal Singh. Dehradun.
- Daimary, R. 2011. *Studies on floristic diversity of Kokrajbar District of Assam with special reference to Chakrasila Wildlife Sanctuary.* Ph.D. Thesis, Gauhati University.
- Das, A.P. 2021. Herbarium Techniques. *In: J.B. Bhandari & C. Gurung (eds.), Instrumentation Manual.* Narosa Publishing House, New Delhi. Pp. 78 – 94.

- Deb, D.B. 1981, 1983. *The Flora of Tripura State*, Vols. I – II. Today and Tomorrow's Printers and Publisher, New Delhi.
- Deka. N. 2015. *Systematic studies of aquatic angiosperms of Bodoland Territorial Council (BTC) area*. Ph. D. Thesis. Gauhati University.
- FSI 2019. *India: State of Forest report*. Forest Survey of India, Ministry of Environment & Forests, Kaulagarh Road, Dehradun.
- Gogoi, K. 2017. *Wild orchids of Assam – A pictorial guide*. Assam State Biodiversity Board, Guwahati, Assam.
- Hamilton, F. & Bhuyan, S.K. 1940. *An account of Assam: with some notices concerning the neighbouring territories*. Govt. of Assam Dept. of Historical and Antiquarian Studies, Narayani Handiqui Historical Institute, Gauhati.
- Haque, M.N.A. 2016. *Aquatic flora of Goalpara district, Assam*. Ph. D. Thesis. Gauhati University.
- IPNI 2022. International Plant Names Index. Published on the Internet <http://www.ipni.org>, The Royal Botanic Gardens, Kew, Harvard University Herbaria & Libraries and Australian National Botanic Gardens. Accessed on 10 March 2022.
- IUCN 2022. *The IUCN Red List of Threatened Species. Version 2021-3*. <https://www.iucnredlist.org>. Accessed on 18 March 2022.
- Jain, S.K. & Rao, R.R. 1977. *A Handbook of Field and Herbarium Methods*. Today & Tomorrow's Printers and Publishers, New Delhi.
- Kanjilal, U.N.; Kanjilal, P.C.; Das, A.; De, R.N. & Bor, N.L. 1934 – 1940. *Flora of Assam*. Vols 1 – 5. Government Press, Shillong.
- Lalfakjuala, R.H.; Lalramnghinglova, H. & Keyang, H. 2007. Ethnobotanical uses of plants in western Mizoram. *Indian journal of Traditional Knowledge* 6: 486 – 493.
- Mao, A.A. & Gogoi, R. 2010. Inventory of Lauraceae in North Eastern India. *Journal of Advanced Plant Sciences* 5(1&2): 1 – 12.
- Modi, R.K. & Mathad, P. 2016. Floristic diversity with reference to Rare and Threatened Plants from the Forest of Yagdir district, Karnataka, India. *International Journal of Scientific Research in Science, Engeneering and Technology* 2(4): 524 – 531.
- Nath, N. 2006. *Dicot Flora of Goalpara district, Assam*. Ph.D. Thesis. Gauhati University.
- Nath, S.N. 1999. *Floristic composition of Orang Wildlife Sanctuary of Assam*. A comprehensive study. Ph. D. Thesis. Gauhati University.
- NIC 2021. Kokrajhar District, Govt. of Assam. Secretariat Administration Department, Govt. of Assam. <https://kokrajhar.assam.gov.in/>
- Perree, W.F. 1908. *The Second Working Plan for the Goalpara Forest Division, Eastern Bengal and Assam, 1907*. Assam Secretariat Printing Press, Shillong.
- Rawat, G.S. 2008. Special habitats and threatened plants of India. ENVIS Bulletin: Wildlife and Protected Areas. Wildlife Institute of India, Dehradun, India. Volume 11(1): 239.
- Tropicos.org. 2022. Missouri Botanical Garden. <https://tropicos.org>. Accessed on 15 March 2022.
- Ved, D.K.; Kinhal, G.A.; Ravikumar, K.; Shankar, R.V. & Haridassan, K. 2003. *Conservation assessment and management prioritization CAMP for the wild medicinal Plants of Northeast India*. FRLHT, Bangalore.
- www.plantsoftheworldonline.org